

F. No. 33-18/2017-MIDH (AAP)
Government of India
Ministry of Agriculture & Farmers Welfare
Department of Agriculture & Cooperation
(Horticulture Division)

Room No.- 434
Krishi Bhawan, New Delhi
Dated: 14th June, 2017

To

Director (Hort.) & Mission Director (SHM)
State Horticulture Mission, Government of Odisha,
VIP Area, Nayapalli
Bhubaneswar – 751 005,

Subject: Implementation of National Horticulture Mission (NHM) under Mission for Integrated Development of Horticulture (MIDH) programme- Approval of Annual Action Plan (AAP) 2017-18-regarding.

Sir,

I am directed to convey approval for implementation of National Horticulture Mission (NHM) programme under MIDH in the State of **Odisha** during 2017-18 with total outlay of **Rs. 9015.06 lakh** (including Rs. 697.06 Lakh Spill over activity/ unspent balance) as per following details:

	(Rs. In lakh)		
	GOI Share (60%)	State Share (40%)	Total
Total Outlay-2017-18	4990.80	3327.20	8318.00
Spill over Activity/ Unspent Balance	418.23	278.82	697.06
Total	5409.03	3606.02	9015.06

2. The component wise details of Annual Action Plan, 2017-18 indicating physical targets and financial outlay are enclosed. Details are also available on NHM website. The approval is subject to the following terms and conditions:-

- I. The State Horticulture Mission (SHM) may start implementation of the programme for activities other than project-based and submit the proposals for project based activities for approval of Empowered Committee of MIDH. For the project based activities, for which powers have been delegated to State Level Executive Committee (SLEC), the minutes of SLEC meeting wherein projects are approved may be furnished to this Department along with details of beneficiaries, location, bank loan, etc. to facilitate release of funds.
- II. Expenditure on approved activities shall be in conformity with the norms laid down in the operational guidelines of the scheme.
- III. SHM should make advance arrangement for procurement of planting material from accredited nurseries/certified planting material/certified seeds for ensuing season. SHM should have a mechanism in place for the proper certification and distribution of planting material/seeds. Sourcing of planting material/seeds from ICAR institutes,

Subst

- SAUs, KVKs and Government Department is to be given priority over other sources. **Area Expansion shall be restricted to availability of planting material from accredited nurseries/certified Planting Material.** In case of Truthfully Labelled (TL) seeds, it should be procured only from public sector agencies. Merely procurement of the planting material/seed through the public sector agencies like Seed Corporation, Agro Corporation and other agencies do not ensure the quality of planting material/seed as they do not produce the same. SHM should ensure that these public sector agencies procure certified material and in case certified material is not available, seedlings/ TL seeds are to be procured only from ICAR institutes, SAUs, KVKs and Government Departments.
- IV. More focus is to be given on enhancing productivity of horticulture crops for the holistic development supported with infrastructure for Pre- and Post- Harvest Management and Marketing.
 - V. To improve the productivity of existing old and senile orchards, there is need to identify gaps and revise the existing strategy for achieving the desired results. A proper mechanism needs to be devised to disseminate technology and train farmers on rejuvenation technology. Exposure visit of farmers should be organized to those institutes/ places where rejuvenation technology has been developed and also adopted by the farmers. Chief Consultants under NHM will visit the State and discuss this matter with the SHM.
 - VI. The programme for protected cultivation and lining of Community tanks/ponds should be taken up in close coordination with the Precision Farming Development Centre (PFDC) in the State.
 - VII. Protected Cultivation of vegetables should be promoted under NHM in clusters around major cities/metros. These clusters may be provided with other infrastructural facilities like pre-cooling units, cold storages, reefer vans, vending carts etc. and marketing arrangements may be tied up by linking with cooperatives/private retail chains like SAFAL, farmer markets.
 - VIII. Organic farming should be linked to certification. No separate funds will be provided for adoption of organic farming alone. Arrangements should also be made by the SHM or concerned agency for the marketing of organic produce. Selection of Service Provider Agencies is to be done by adoption of competitive bidding.
 - IX. IPM measures should be need based and are to be taken after clearly identifying the problem of pests/disease in the clusters. INM measures are to be adopted in the clusters to correct soil deficiency and reduce excessive dependence on chemical fertilizers.
 - X. The creation of water harvesting structure should be implemented in conjunction with Mahatma Gandhi National Rural Employment Guarantee Scheme (MNREGA) wherever feasible and should be compulsorily linked with the new area expansion and micro-irrigation programmes.
 - XI. For implementation of horticulture mechanization, PHM, marketing and mobile/primary processing activities, SHM should make efforts to organize self-help groups, farmers' interest groups, growers association at local level and also involve Panchayats, Cooperatives, Producers Company etc. In this regard, SHM is to play pro-active role and should appoint one senior level officer as nodal officer and make him responsible for these components.
 - XII. Efforts should also be made for the buyback arrangements of the horticulture produce.
 - XIII. SHM should involve State Agricultural University and ICAR Institutes in the State for the extension activities under NHM.

Subshree

- XIV. SHM shall document the Annual Report and success stories and furnish them to DAC&FW.
- XV. The SHM should also conduct Impact Evaluation Study through independent organization of repute in the State.
- XVI. While implementing the NHM programme, convergence and synergy should be ensured with the other schemes like Micro Irrigation, RKVY, PKVY, MNREGS, National Mission on Medicinal Plants, AEZs of APEDA, Tribal Sub Plan, Mega Food Parks of Ministry of Food Processing Industries, Watershed Development Programmes, BRGF and Schemes of the State Government.
- XVII. The Audited Statement of Accounts (ASA) for 2015-16 and Utilization Certificate for 2016-17, if not submitted so far, should be furnished to facilitate release of funds during 2017-18.
- XVIII. According to the provisions of the Fiscal Responsibilities and Budget Management (FRBM) Act, 2003 and Rules thereof, regular feedback from the implementing agencies on the physical and financial progress of the activities is necessary for periodical review.
- XIX. The monthly physical and financial progress may be posted on the website www.nhm.nic.in by the 5th of every month and certified hard copy be furnished to this Department by the 10th of every month following the month under report.. Status of project based proposals need also to be uploaded on NHM website.
- XX. It may be noted that the release of funds would be subject to the furnishing of requisite information as mentioned above. In addition to that, a mid-term review would be undertaken at appropriate time.

3. The SHM is also requested to implement the scheme keeping in view the broad discussions held during review meeting held on 2nd – 3rd May, 2017.

Encl: as above

Yours faithfully,



(M.K. Mishra)

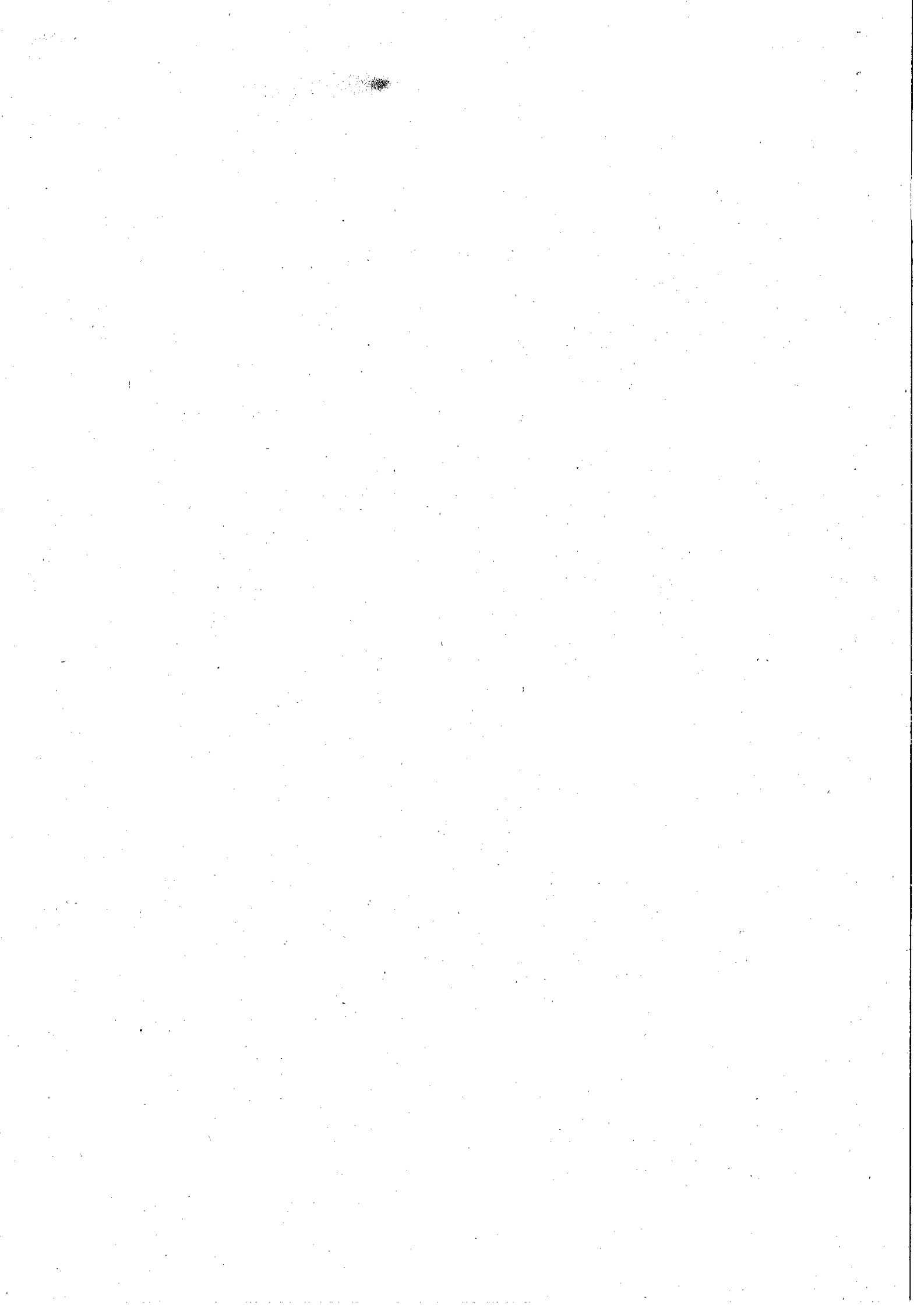
Under Secretary (MIDH)

Ph. No. 011-23074238

Email: mrityunjaya.m@nic.in

Copy to:

1. Tech. Dir.(NIC) for uploading

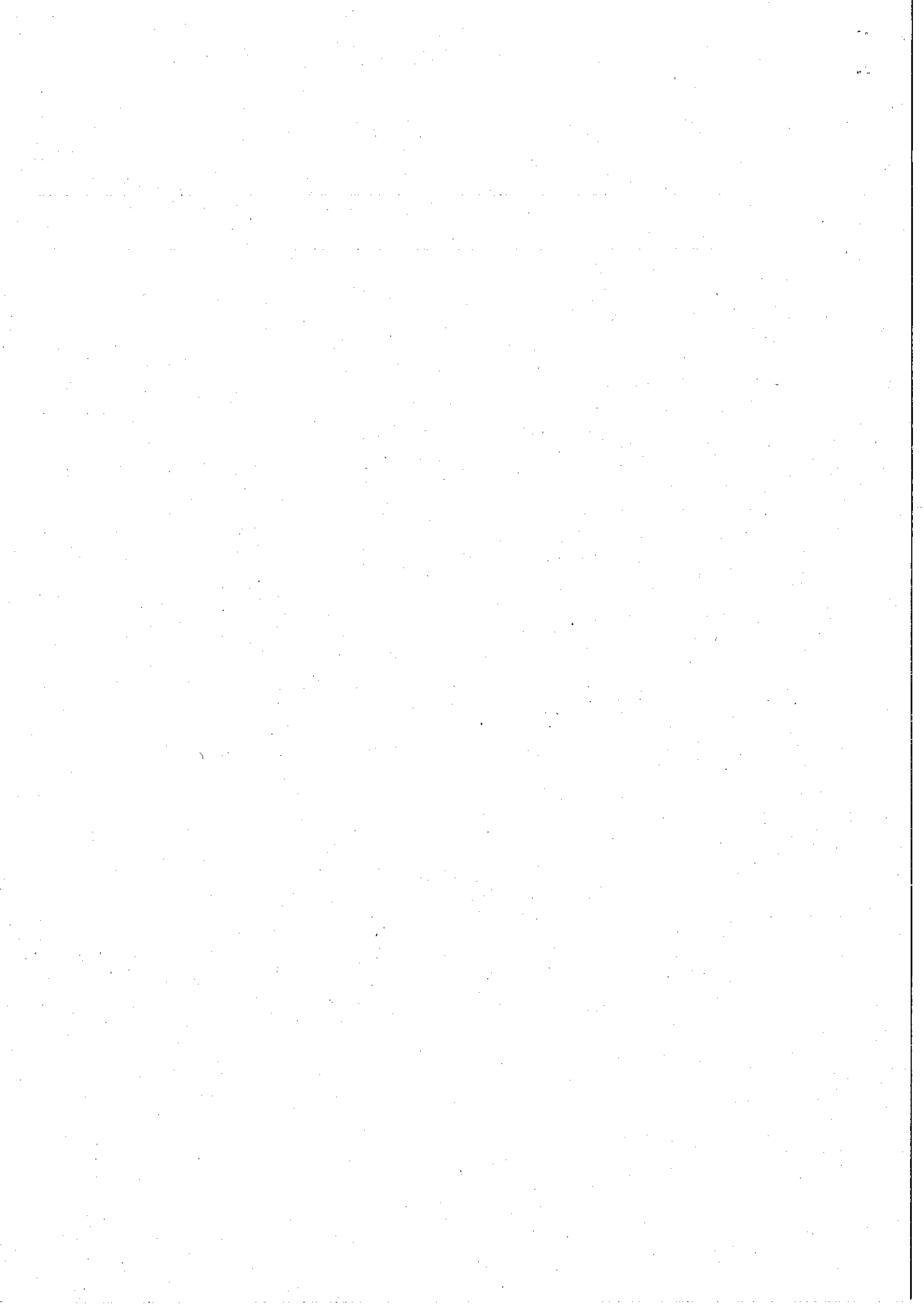


Dated -14-6-2017

Summary of Action Plan 2017-18 Odisha

S.No	Component	Unit	2017-18					Spill Over	
			Phy Target	Fin. Outlay	GOI Share	State Share	%	Phy Target	Fin. Outlay
1	Nursery and planting Materials	No.	5	158.8	95.3	63.5	1.9	0.0	0.0
2	Establishment of new gardens	Ha.	9965	1339.5	803.7	535.8	16.1	59.8	13.81
3	Mushroom	No.	27.00	186.0	111.6	74.4	2.2	2.0	10.8
4	Maintenance 1 & 2 Year	Ha.	10502	337.8	202.7	135.1	4.1	0.0	0.0
5	Rejuvenation/ replanting	Ha.	250.00	50.0	30.0	20.0	0.6	5.0	1.0
6	Promotion of IPM/INM	Ha.	1500	18.0	10.8	7.2	0.2	8.0	0.1
7	Organic Farming		0	0	0	0	0.0	72	36.0
8	FLD+ PFDC+GAP	No.	1	25.0	15.0	10.0	0.3	0.0	0.0
9	Post Harvest Management	No.	1711	2650.1	1590.1	1060.0	31.9	212.0	479.4
10	Markets	No.	50	164.6	98.8	65.8	2.0	0.0	0.0
11	Creation of Water resources	No.	305	325.0	195.0	130.0	3.9	22.0	47.8
12	Protected cultivation	Ha.	1243.45	1523.3	914.0	609.3	18.3	1.8	73.2
13	Horticulture Mechanization	No.	293	168.6	101.1	67.4	2.0	698.0	25.3
14	Beekeeping	No.	662	5.3	3.2	2.1	0.1	0.0	0.0
15	Human Resource Development	No.	8871	278.4	167.1	111.4	3.3	0.0	0.0
16	Special Interventions	No.	1	518.0	310.8	207.2	6.2	0.0	0.0
17	Others (Awareness, Survey, etc.)		78	158.0	94.8	63.2	1.9	0.0	0.0
18	Mission Management			411.7	247.0	164.7	4.9	0.0	9.7
	G. Total			8318.0	4990.8	3327.2	100.0		697.1

shshw



52/20

Annual Action Plan of NHM States, 2017-18

Action Plan 2017-18

S. No	Activity	Maximum permissible cost	Pattern of Assistance	AAP 2017-18			Spill Over		Remarks	
				Phy Target	Fin. Outlay	GOI Share 60%	State Share 40%	Phy Target		Fin. Outlay
1	2	3	4		6	7	8	6		
Plantation Infrastructure and Development										
Production of planting material Public Sector										
Hi-tech nursery (4ha)										
	a) Public Sector	Rs. 25.00 lakh/ha	100% to public sector limited to Rs 100 lakh/unit and in case of private sector, credit linked back-ended subsidy @ 40% of cost, subject to a maximum of Rs. 40 lakh/unit, for a maximum of 4 ha. as project based activity on prorata basis. Each nursery will produce a minimum of 50,000 numbers per hectare of mandated perennial fruit crops/ tree spices/ aromatic trees/plantation crops per year, duly certified for its quality.	1	25.00	15.00	10.00		0.00	Project to be submitted
	b) Private Sector	Rs. 25 lakh/ha unit		2	20.00	12.00	8.00		0.00	Project to be submitted
Small Nursery (1 ha)										
	a) Public Sector	Rs. 15 lakh/one ha unit	100% to public sector and in case of private sector, credit linked back-ended subsidy @ 50% of cost, subject to a maximum of Rs. 7.50 lakh/unit, as project based activity. Each nursery will produce a minimum of 25,000 numbers of mandated perennial vegetatively propagated fruit plants/tree spices/plantation crops aromatic plants, per year, duly certified for its quality.		0.00	0.00	0.00		0.00	Minutes of SLEC meeting to be submitted along with details of beneficiaries, location, bank loan etc to facilitate release of funds.
	b) Private Sector	Rs. 15 lakh/one ha unit		2	15.00	9.00	6.00		0.00	do
Upgrading nursery infrastructure to meet accreditation norms (4 ha)										
	a) Public Sector	Up to Rs. 10.00 lakh/nursery of 4 ha, on prorata basis	100% of Public Sector	9	22.50	13.50	9.00		0.00	Minutes of SLEC meeting to be submitted along with details of beneficiaries,
	b) Private sector	Up to Rs. 10.00 lakh/nursery of 4 ha, on prorata basis	50% of cost to Private sector subject to a maximum of Rs. 5.00 lakh/nursery.	1	1.25	0.75	0.50		0.00	
Setting up of new TC Units.										
	a) Public Sector	Rs. 250.00 lakh	100% of cost to public sector		0.00	0.00	0.00		0.00	Project to be submitted

Signature

	b) Private sector	Rs. 250.00 lakh	40% of cost to private sector	1	75.00	45.00	30.00	0.00	Project to be subsidized
	Sub-total Planting material			16.00	158.75	95.25	63.50	0.00	0.00
2	Establishment of new gardens / Area Expansion								
	Fruit crops other than cost intensive crops using normal spacing (For a maximum area of 4 ha per beneficiary)								
	Fruits - Perennials								
	(a) Cost intensive crops								
	Fruit crops like Grape, Kiwi, Passion fruit etc.								
	iii) Banana (sucker)								
	b) Without integration	Rs.87,500/ha	Maximum of Rs. 0.35 lakh/ha (40% of cost) for meeting the expenditure on planting material and cost of INM/PM in 2 installments (75:25). For (a) and (b) above, in the case of TSP areas, Andaman & Nicobar and Lakshadweep Islands, assistance will be @ 50% of cost in 2 installments.		0.00	0.00	0.00	50	9.75 2m x 2m
	Sub total								
	Maintenance without integration			0	0.00	0.00	0.00	50	9.75
	1st Year			68	4.42	2.65	1.77		0.00
	Sub total maintenance								
	iv) Pineapple (sucker)			68	4.42	2.65	1.77	0	0.00
	Maintenance without integration								
	1st Year			7	0.61	0.37	0.25		0.00
	Sub total maintenance								
	v) Banana (TC)			7	0.61	0.37	0.25	0	0.00
	a) Integrated package with drip irrigation.	Rs. 3.00 lakh/ha	Maximum of Rs. 1.20 lakh/ha (40 % of cost) for meeting the expenditure on planting material and cost of material for drip system, INM/PM etc., in 2 installments (75:25).		0.00	0.00	0.00		0.00
	b) Without integration	Rs. 1.25 lakh/ha.	Max. of Rs. 0.50 lakh per ha. (40% of cost) for meeting the expenditure on planting material and cost of INM/PM in 2 installments (75:25). For (a) and (b) above, in the case of TSP areas, Andaman & Nicobar and Lakshadweep Islands, assistance will be @ 50% of cost in 2 installments (75:25).	200	61.48	36.89	24.59	3	0.98 (1.8m x 1.8m)
	Sub total								
	Maintenance without integration			200	61.48	36.89	24.59	3	0.98
	1st Year			266	27.26	16.36	10.90		0.00

6/20

msw

Sub total maintainance		266.00	27.26	16.36	10.90	0.00
vii) Papaya						
a) Integrated package with drip irrigation.	Rs. 2.00 lakh/ha.		0.00	0.00	0.00	0.00
b) Without integration	Rs. 60,000/ha	200.0	45.00	27.00	18.00	1.76 (1.8m x 1.8m)
Sub total		200	45.00	27.00	18.00	1.76
Maintenance without integration						
1st Year		296	22.20	13.32	8.88	0.00
Sub total maintainance		296	22.20	13.32	8.88	0.00
viii) Ultra high density (Meadow orchard)						
a) Integrated package with drip irrigation	Rs. 2.00 lakh/ha.		0.00	0.00	0.00	0.00
b) Without integration	Rs. 1.25 lakh/ha		0.00	0.00	0.00	0.00
Sub total		0	0.00	0.00	0.00	0.00
Maintenance without integration						
1st Year (Mango)		5.4	0.48	0.29	0.19	0.00
2nd Year			0.00	0.00	0.00	0.00
Sub total maintainance		5	0.48	0.29	0.19	0.00
ix) High density planting (mango, guava, litchi, pomegranate, apple, citrus etc).						

Subshwo

20/08/20

11/8/20

Cashew	Rs. 40,000ha	Maximum of Rs. 20,000/- per ha (50% of cost for meeting the expenditure on planting material and cost of material for INM/IPM etc) in 3 installments of 60:20:20 subject to survival rate of 75% in second year and 90% in third year for a maximum area of 4 ha	1400	56.00	33.60	22.40	0.00	0.00
Cocoa	Rs. 40,000ha	Maximum of Rs. 20,000/- per ha (50% of cost for meeting the expenditure on planting material and cost of material for INM/IPM etc) in 3 installments of 60:20:20 subject to survival rate of 75% in second year and 90% in third year for a maximum area of 4 ha		0.00	0.00	0.00	0.00	0.00
Cocoa inter Crop in Arecanut Gardens	Rs. 40,000ha	Maximum of Rs. 20,000/- per ha (50% of cost for meeting the expenditure on planting material and cost of material for INM/IPM etc) in 3 installments of 60:20:20 subject to survival rate of 75% in second year and 90% in third year for a maximum area of 4 ha		0.00	0.00	0.00	0.00	0.00
Sub-total maintenance			1400	56.00	33.60	22.40	0	0.00
Grand Total Area Expansion			9965.00	1339.47	803.68	535.79	59.79	13.81
Grand Total Area Expansion maintenance			10501.70	337.76	202.66	135.11	0.00	0.00
Mushrooms								
Production unit								
Public Sector	Rs. 20.00 lakh/ unit	100% of the cost.		0.00	0.00	0.00		0.00
Private Sector	Rs. 20.00 lakh/ unit	40% of cost for private sector, for meeting the expenditure on infrastructure, as credit linked back ended subsidy.	10.0	80.00	48.00	32.00		0.00
Spawn making unit								
Public Sector	Rs. 15 lakh/ unit	100% of the cost.		0.00	0.00	0.00		0.00
Private Sector	Rs. 15 lakh/ unit	40% of cost for private sector, for meeting the expenditure on infrastructure, as credit linked back ended subsidy.	15.0	90.00	54.00	36.00	2.0	10.76
Compost making unit								
Public Sector	Rs. 20.00 lakh/ unit	100% of the cost.		0.00	0.00	0.00		0.00
Private Sector	Rs. 20.00 lakh/ unit	40% of cost for private sector, for meeting the expenditure on infrastructure, as credit linked back ended subsidy.	2.0	16.00	9.60	6.40		0.00
Sub-total mushrooms			27.00	186.00	111.60	74.40	2.00	10.76

Subtotal

5	Rejuvenation/ replacement of senile plantation including Canopy management. Mango	Rs. 40,000/ha	50% of the total cost subject to a maximum of Rs. 20,000/ha limited to two ha per beneficiary.	250.00	50.00	30.00	20.00	5.00	1.00	To be implemented as per guidelines
	Sub-total			250	50.00	30.00	20.00	5	1.00	
	Creation of Water resources									
	Community tanks									
	i) Community tanks/on farm ponds/on farm water reservoirs with use of plastic/RCC lining - (10 ha. of command area, with pond size of 100m x 100m									
	Community tanks/on farm ponds/on farm water reservoirs with use of plastic/RCC lining									
	Plain areas	Rs. 20.00 lakh in plain areas	100% of cost for 10 ha command	5	100.0	60.00	40.00	8	40.0	
	Hilly areas.	Rs. 25 lakh/ unit for Hilly areas.	100% of cost for 10 ha command		0.00	0.00	0.00		0.00	
	ii) Water harvesting system for individuals- for storage of water in 20mx20mx3m									
	Plain areas	Rs. 1.50 lakh/unit in plain areas and	50% of cost. Maintenance to be ensured by the beneficiary.	300	225.0	135.00	90.00	14	7.8	
	Hilly areas.	Rs. 1.80 lakh/unit in hilly areas	50% of cost. Maintenance to be ensured by the beneficiary.		0.00	0.00	0.00		0.00	
	Sub-total			305	325.00	195.00	130.00	22	47.80	
5	Protected cultivation									
	a) Green House structure									
	Fan & Pad system	Rs. 1650/Sq.m (up to area 500 Sq. m)	50% of cost for a maximum area of 4000 sq. m per beneficiary.	0.15	12.38	7.43	4.95		0.00	Minutes of SLEC meeting to be submitted along with
	Hilly areas.	Rs. 1290/Sq.m	do		0.00	0.00	0.00		0.00	
	(i) Tubular structure	Rs. 935/Sq.m (>500 Sq. m up to 1008 Sq. m)	50% of the cost limited to 4000 Sq.m per beneficiary.	1.50	70.13	42.08	28.05	1.02	47.69	
	(i) Tubular structure	Rs. 890/Sq. m (>1008 Sq.m up to 2080 Sq. m)	50% of the cost limited to 4000 Sq.m per beneficiary.	1.60	71.20	42.72	28.48		0.00	
	(i) Tubular structure	Rs. 844/Sq. m (>2080 Sq. m up to 4000 Sq. m)	50% of the cost limited to 4000 Sq.m per beneficiary.	12.00	506.40	303.84	202.56	0.24	10.21	
	iii) Bamboo structure	Rs. 450/Sq. m	50% of the cost limited to 20 units (each unit should not exceed 200 Sqm per beneficiary.	1.00	22.50	13.50	9.00	0.03	0.68	
	iii) Bamboo structure	Rs. 518/Sq. m for hilly areas	50% of the cost limited to 20 units (each unit should not exceed 200 Sqm per beneficiary.		0.00	0.00	0.00		0.00	
	c) Plastic Mulching									
	Plastic Mulching.	Rs. 32,000/ha	50% of the total cost limited to 2 ha per beneficiary.	1200	192.00	115.20	76.80		0.00	
	Plastic Mulching	Rs. 36,800/ha for hilly areas	50% of the total cost limited to 2 ha per beneficiary.		0.00	0.00	0.00		0.00	

12 of 20

radius

c) Shade Net House																				
i) Tubular structure	Rs. 710/Sq.m	50% of cost limited to 4000 Sq.m per beneficiary.	4.00	142.00	0.00	0.00	0.00	0.00	0.00	0.30	10.65									
iii) Bamboo structure	Rs.360/Sq.m	50% of cost limited to 20 units (each unit not to exceed 200 sq. m) per beneficiary.	4.00	72.00	43.20	28.80	0.20	3.96												
iii) Bamboo structure	Rs. 414/Sq. m for hilly areas	50% of cost limited to 20 units (each unit not to exceed 200 sq. m) per beneficiary.		0.00	0.00	0.00		0.00												
Plastic Tunnels	Rs. 60/Sq.m	50% of cost limited 1000 sq. m per beneficiary.	1	1.50	0.90	0.60		0.00												
Plastic Tunnels	Rs.75/Sq.m for hilly areas.	50% of cost limited 1000 sq. m per beneficiary.		0.00	0.00	0.00		0.00												
Walk in tunnels	Rs. 600/ Sq.m	50% of the cost limited to 4000 sq.m. (each unit not to exceed 800 Sq. m per beneficiary).	1	15.00	9.00	6.00		0.00												
e) Anti Bird/Anti Hail Nets	Rs.35/- per Sq.m	50% of cost limited to 5000 Sq.m per beneficiary.	1	1.93	1.16	0.77		0.00												
f) Cost of planting material & cultivation of high value vegetables grown in poly house	Rs.140/Sq. m	50% of cost limited to 4000 Sq.m. per beneficiary.	2	14.00	8.40	5.60		0.00												
g) Cost of planting material & cultivation of Orchid & Anthurium under poly house/shade net house.	Rs. 700/Sq.m	50% of cost limited to 4000 Sq. m per beneficiary.	2.00	70.00	42.00	28.00		0.00												
h) Cost of planting material & cultivation of Camation & Gerbera under poly house/shade net house.	Rs. 610/Sq.m	50% of cost limited to 4000 Sq. m per beneficiary.	2.00	61.00	36.60	24.40		0.00												
i) Cost of planting material & cultivation of Rose and lillum under poly house/shade net house	Rs. 426/Sq.m.	50% of cost limited to 4000 Sq. m per beneficiary.	10.00	213.00	127.80	85.20		0.00												
Sub-total protected cultivation			1243.45	1523.33	914.00	609.33	1.79	73.18												
6 Promotion of Integrated Nutrient Management(INM)/ Integrated Pest																				
Promotion of IPM	Rs. 4000/ha	30% of cost subject to a maximum of Rs 1200/ha limited to 4.00 ha/ beneficiary.	1500	18.00	10.80	7.20	8	0.10												
Sub-total INM / IPM			1500	18.00	10.80	7.20	8	0.10												
7 Adoption Organic Farming																				
iii) Vermi compost Units /organic input production unit																				
i) Vermi compost Units	Rs.1,00,000/ unit for permanent structure and Rs. 16,000/unit for HDPE Vermibed.	50% of cost conforming to the size of the unit of 30'x8'x2.5' dimension of permanent structure to be administered on pro-rata basis. 50% of cost conforming to the size of 96 cft (12'x4'x2') and IS 15907:2010 to be administered on pro-rata basis.		0.00	0.00	0.00	72	36.00												
ii) Vermibeds	do	do		0.00	0.00	0.00		0.00												

Subtotal

13/2

	Sub-total			0.00	0.00	0.00	0.00	0.00	72.00	36.00
	Certification for Good Agricultural Practices (GAP), Including Infrastructure	Rs. 10,000/ ha	50% of the cost for maximum of 4ha/beneficiary.		0.00	0.00	0.00	0.00		0.00
	CoE									
	Total CoE			0	0.00	0.00	0.00	0.00	0	0.00
8	Pollination support through beekeeping									
	Production of nucleus stock (Public sector)	Rs. 20.00 lakh	100% of the cost.		0.00	0.00	0.00	0.00		0.00
	Production of bee colonies by bee breeder	Rs. 10.00 lakh	40% of cost for producing min. of 2000 colonies / Year		0.00	0.00	0.00	0.00		0.00
	Honey bee colony	Rs. 2000/colony of 8 frames	40% of cost limited to 50 colonies / beneficiary.	337	2.70	1.62	1.08	0.00		0.00
	Hives	Rs 2000/ per hive.	40% of cost limited to 50 colonies / beneficiary.	325	2.60	1.56	1.04	0.00		0.00
	Equipment including honey extractor (4 frame), food grade container (30 kg), net, etc.	Rs. 20,000/set	40% of the cost limited to one set per beneficiary.		0.00	0.00	0.00	0.00		0.00
	Sub-total			662	5	3	2	0	0	0
9	Horticulture Mechanization									
	i) Tractor (upto 20 PTO HP)	3.00 lakh/unit	25% of cost, subject to a maximum of Rs. 0.75 lakh/unit for general category farmers, and in the case if SC, ST, Small & Marginal farmers, women farmers and beneficiaries in NE states, 35% of cost, subject to a maximum of Rs. 1.00 lakh per unit.	70	52.50	31.50	21.00	9	6.75	
	j) Tractor (upto 20 PTO HP) (SC, ST, Small & Marginal farmers)	3.00 lakh/unit	25% of cost, subject to a maximum of Rs. 0.75 lakh/unit for general category farmers, and in the case if SC, ST, Small & Marginal farmers, women farmers and beneficiaries in NE states, 35% of cost, subject to a maximum of Rs. 1.00 lakh per unit.	30	30.00	18.00	12.00		0.00	
	ii) Power Tiller									
	a) Power tiller (below 8 BHP)	1.00 lakh per unit	Subject to a maximum of Rs.0.40 lakh/unit for general category farmers, and in the case if SC, ST, Small & Marginal farmers, women farmers and beneficiaries in NE states, subject of a maximum of Rs. 0.50 lakh/unit.	90	36.00	21.60	14.40		0.00	

14/02/20

adishap

15/20

(SC, ST, Small & Marginal farmers)	1.00 lakh per unit	Subject to a maximum of Rs.0.40 lakh/unit for general category farmers, and in the case of SC, ST, Small & Marginal farmers, women farmers and beneficiaries in NE states, subject of a maximum of Rs. 0.50 lakh/unit.	3	1.50	0.90	0.60	0.00	
iv) Self-propelled Horticulture Machinery	2.50 lakh per unit	Subject to a maximum of Rs. 1.00 lakh/unit for general category farmers, and in the case of SC, ST, Small & Marginal farmers, women farmers and beneficiaries in NE states, subject of a maximum of Rs. 1.25 lakh/unit.	25	25.00	15.00	10.00	18.50	
iv) Self-propelled Horticulture Machinery (SC, ST, Small & Marginal farmers)	2.50 lakh per unit	Subject to a maximum of Rs. 1.00 lakh/unit for general category farmers, and in the case of SC, ST, Small & Marginal farmers, women farmers and beneficiaries in NE states, subject of a maximum of Rs. 1.25 lakh/unit.	15	18.75	11.25	7.50	0.00	
(v) PP Equipment								
Tractor Mounted /operated sprayer (Below 20HP)								
a) General	0.20 lakh per unit	Subject to a maximum of Rs. 0.08 lakh/unit for general category farmers, and in the case of SC, ST, Small & Marginal farmers, women farmers and beneficiaries in NE states, subject of a maximum of Rs. 0.10 lakh/unit.	60	4.80	2.88	1.92	0.00	
Sub-total			293	168.55	101.13	67.42	25.25	
Technology Dissemination through demonstration/ Front Line Demonstration (FLD)	Rs. 25.00 lakh	75 % of cost in farmers' field and 100% of cost in farms belonging to Public Sector, SAUs etc. No change	1	25.00	15.00	10.00	0.00	Project to be submitted
10 Human Resource Development (HRD)								
Skill Development			200	32.84	19.70	13.14	0.00	Rs.16420/ farmer for 200 hours training (100%of the cost)
HRD for Supervisors & Entrepreneurs	Rs. 20.00 lakh / unit	100% of the cost in first year. In subsequent years, cost of infrastructure not to be claimed.		0.00	0.00	0.00	0.00	
HRD for Gardeners	Rs. 15.00 lakh / unit	100% of the cost.	2	17.00	10.20	6.80	0.00	
Training of farmers								
Within the State	Rs. 1000/day per farmer including transport.	100% of the cost.	6500	65.00	39.00	26.00	0.00	
Outside the state	Project based as per actual.	100% of the cost.	1000	50.00	30.00	20.00	0.00	
(e) Exposure visit of farmers								
					0.00	0.00	0.00	

Handwritten signature

16/20

Outside the State	Project based as per actual.	100% of the cost	800	40.00	24.00	16.00	0.00	
Outside India	Rs. 4.00 lakh / participant	Project Based. 100% of air/rail travel cost	7.00	28.00	16.80	11.20	0.00	Project to be submitted
Training / study tour of technical staff/ field functionaries								
Within the State	Rs.300/day per participant plus TA/DA, as admissible	100% of the cost	300	3.60	0.00	0.00	0.00	
Study tour to progressive States/ units (group of minimum 5 participants)	Rs.800/day per participant plus TA/DA, as admissible	100% of the cost	60	30.00	18.00	12.00	0.00	
Outside India	Rs. 6.00 lakh / participant	100% of the cost on actual basis.	2	12.00	7.20	4.80	0.00	Project to be submitted
Sub-total			8871	278	167	111	0	0
INTEGRATED POST HARVEST MANAGEMENT								
11								
Pack house / On farm collection & storage unit	Rs. 4.00 lakh/unit with size of 9MX6M	50% of the capital cost.	225	450.00	270.00	180.00	63	126.00
Integrated pack house unit facilities for conveyor belt, sorting, grading units, washing, drying and weighing.	Rs. 50.00 lakh per unit with size of 9MX18M							
a) General Area	Rs. 50.00 lakh per unit with size of 9MX18M		3	52.50	31.50	21.00	0.00	0.00
b) Hilly Area	Rs. 50.00 lakh per unit with size of 9MX18M			0.00	0.00	0.00	0.00	0.00
Pre-cooling unit	Rs. 25.00 lakh / unit with capacity of 6MT.	Credit linked back-ended subsidy @ 35% of the cost of project in general areas and 50% of cost in case Hilly & Scheduled areas, per beneficiary.	4	35.00	21.00	14.00	1	8.75
Pre-cooling unit (Hilly areas)	Rs. 25.00 lakh / unit with capacity of 6MT.			0.00	0.00	0.00	0.00	0.00
Cold room (staging)	Rs. 15.00 lakh/ unit of 30 MT capacity		20	105.00	63.00	42.00	0.00	0.00
Cold room (staging) (Hilly areas)	Rs. 15.00 lakh/ unit of 30 MT capacity			0.00	0.00	0.00	0.00	14.60
Mobile pre-cooling unit	Rs. 25.00 lakh			0.00	0.00	0.00	0.00	0.00
Mobile pre-cooling unit (Hilly areas)	Rs. 25.00 lakh			0.00	0.00	0.00	0.00	0.00
Cold Storage (Construction, Expansion and Modernisation)								
i) Cold storage units Type 1 - basic mezzanine structure with large chamber (of >250 MT)								
a) General Area	Rs. 8,000/MT, (max 5,000 MT capacity)	Credit linked back-ended subsidy @ 35% of the cost of project in general areas and 50% of cost in case Hilly & Scheduled areas, per beneficiary.	6	840.00	504.00	336.00	1	140.00
b) Hilly Area	Rs. 8,000/MT, (max 5,000 MT capacity)	Credit linked back-ended subsidy @ 35% of the cost of project in general areas and 50% of cost in case Hilly & Scheduled areas, per beneficiary.		0.00	0.00	0.00		0.00
Technology induction and modernisation of cold-chain								

Adushe

17/8/20

a) General Area	Max Rs. 250.00 lakh for modernization of PLC equipment, packaging lines, dock levelers, advanced graders, alternate technologies, stacking systems.	Credit linked back-ended subsidy @ 35% of the cost of project in general areas and 50% of cost in case Hilly & Scheduled areas, per beneficiary.	1	35.00	21.00	14.00	1	35.00	Project to be submitted
b) Hilly Area	Max Rs. 250.00 lakh for modernization of PLC equipment, packaging lines, dock levelers, advanced graders, alternate technologies, stacking systems.	Credit linked back-ended subsidy @ 35% of the cost of project in general areas and 50% of cost in case Hilly & Scheduled areas, per beneficiary.		0.00	0.00	0.00		0.00	Project to be submitted
C.A/M.A. Storage units -	Rs. 32,000/ MT for 5000 MT capacity	Credit linked back-ended subsidy @40% of the cost of project in General areas.		0.00	0.00	0.00		0.00	
Refer vans/ containers (general areas)									
a) General Area	Rs. 26.00 lakh for 9 MT (NHM & HMNEH), and prorata basis for lesser capacity, but not below 4 MT.	Credit linked back-ended subsidy @ 35% of the cost of project in general areas and 50% of cost in case of Hilly & Scheduled areas, per beneficiary.	6	54.60	32.76	21.84	1	9.10	Project to be submitted
b) Hilly Area	Rs. 26.00 lakh for 9 MT (NHM & HMNEH), and prorata basis for lesser capacity, but not below 4 MT.	Credit linked back-ended subsidy @ 35% of the cost of project in general areas and 50% of cost in case of Hilly & Scheduled areas, per beneficiary.		0.00	0.00	0.00		0.00	Project to be submitted
Ripening chamber project in general areas	Rs. 1.00 lakh/MT.	-do-	100	35.00	21.00	14.00		0.00	5 ripening chamber each of 20 MT
Ripening chamber project in Hilly areas	Rs. 1.00 lakh/MT.	-do-		0.00	0.00	0.00		0.00	
Evaporative / low energy cool chamber (8 MT)	Rs. 5.00 lakh/unit	50% of the total cost.	100	250.00	150.00	100.00	16	40.00	Minutes of SLEC meeting to be submitted along with details of beneficiaries.
Primary/ Mobile / Minimal processing unit									
a) General Area	Rs. 25.00 lakh/unit.	Credit linked back-ended subsidy @ 40% of the capital cost of project in general areas and 55% in case of Hilly & Scheduled areas, per beneficiary.	9	90.00	54.00	36.00		0.00	
b) Hilly Area	Rs. 25.00 lakh/unit.	Credit linked back-ended subsidy @ 40% of the capital cost of project in general areas and 55% in case of Hilly & Scheduled areas, per beneficiary.		0.00	0.00	0.00		0.00	Project to be submitted

Handwritten signature

18 of 20

	Preservation unit (low cost)	Rs.2.00 lakh/unit for new unit and Rs.1.00lakh/unit for up-gradation	50% of the total cost.																
	New Unit	Rs.2.00 lakh/unit for new unit		250.00	250.00	150.00	100.00	62.00	62.00										
	Upgraded unit	Rs.1.00lakh/unit for up-gradation		12	6.00	3.60	2.40	0.00	0.00										
	Low cost onion storage structure (25 MT)	Rs. 1.75 lakh/per unit	50% of the total cost.	500	437.50	262.50	175.00	50	43.75										
	Pusa Zero energy cool chamber (100 kg)	Rs. 4000 per unit	50% of the total cost.	475	9.50	5.70	3.80	12	0.24										
	Integrated Cold Chain supply System																		
	a) General Area	Project Based. Project should comprise of minimum two components listed under C.1 to C.13 above, with maximum cost of Rs. 600.00 lakh.	Credit linked back-ended subsidy @ 35% of the cost of project in general areas and 50% of cost in case Hilly & Scheduled areas, per beneficiary.		0.00	0.00	0.00	0.00	0.00										0.00
	b) Hilly Area		Credit linked back-ended subsidy @ 35% of the cost of project in general areas and 50% of cost in case Hilly & Scheduled areas, per beneficiary.		0.00	0.00	0.00	0.00	0.00										0.00
	Sub-total			1711.00	2650.10	1590.06	1060.04	212.00	479.44										
12	ESTABLISHMENT OF MARKETING INFRASTRUCTURE FOR																		
	Terminal markets	Rs. 150.00 crore/ project	25% to 40% (limited to Rs.50.00 crore) as Public-Private Partnership mode through competitive bidding, in accordance with operational guidelines issued separately.		0.00	0.00	0.00	0.00	0.00										0.00
	Rural Markets/ Apni mandies/Direct markets																		
	a) General Area	Rs. 25.00 lakh	Credit linked back-ended subsidy @ 40% of the capital cost of project in general areas and 55% in case of Hilly & Scheduled areas, per beneficiary.	2	20.00	12.00	8.00	0.00	0.00										0.00
	b) Hilly Area	Rs. 25.00 lakh	Credit linked back-ended subsidy @ 40% of the capital cost of project in general areas and 55% in case of Hilly & Scheduled areas, per beneficiary.		0.00	0.00	0.00	0.00	0.00										0.00
	Retail Markets/ outlets (environmentally controlled)																		
	a) General Area	Rs. 15.00 lakh /unit	Credit linked back-ended subsidy @ 35% of the capital cost of project in general areas and 50% in case of Hilly & Scheduled areas, per beneficiary.	4	21.00	12.60	8.40	0.00	0.00										0.00
	Minutes of SLEC meeting to be submitted along with details of beneficiaries, location, etc to facilitate release of funds.																		

adulshuf

19/20

b) Hilly Area	Rs. 15.00 lakh /unit	Credit linked back-ended subsidy @ 35% of the capital cost of project in general areas and 50% in case of Hilly & Scheduled areas, per beneficiary.		0.00	0.00	0.00	0.00	Minutes of meeting to be submitted along with details of beneficiaries, etc to facilitate release of funds.
Static/Mobile Vending Cart/ platform with cool chamber.	Rs. 30,000/ unit	50% of total cost.	24	3.60	2.16	1.44	0.00	0.00
Sub-total			30.00	44.60	26.76	17.84	0.00	0.00
Functional Infrastructure for:								
Collection, sorting/ grading, packing units etc.								
a) General Area	Rs. 15.00 lakh	Credit linked back-ended subsidy @ 40% of the capital cost of project in general areas and 55 % in case of Hilly & Scheduled areas, per beneficiary.	20.00	120.00	72.00	48.00	0.00	
b) Hilly Area	Rs. 15.00 lakh	Credit linked back-ended subsidy @ 40% of the capital cost of project in general areas and 55 % in case of Hilly & Scheduled areas, per beneficiary.		0.00	0.00	0.00	0.00	
Quality control/ analysis lab	Rs. 200.00 lakh	100% of the total cost to public sector as credit linked back ended subsidy.		0.00	0.00	0.00	0.00	
Quality control/ analysis lab	Rs. 200.00 lakh	50% of cost to private sector as credit linked back ended subsidy.		0.00	0.00	0.00	0.00	
Gravity operated rope way in hilly areas	Rs. 15.00 lakh/km	Credit linked back-ended subsidy @ 50% of capital costs in Hilly areas.		0.00	0.00	0.00	0.00	
Sub-total			20.00	120.00	72.00	48.00	0.00	0.00
	Total MKT		50.00	164.60	98.76	65.84	0.00	0.00
FOOD PROCESSING								
Food processing units	Rs. 800 lakh/unit	Credit linked back ended capital investment assistance of 50% of cost in the States of J&K, Himachal and Uttarakhand		0.00	0.00	0.00	0.00	
Sub-total			0.00	0.00	0.00	0.00	0.00	0.00
SPECIAL INTERVENTIONS								
Innovative interventions not covered under any GOI schemes	10% of outlay	50% of cost, based on project proposal.		0.00	0.00	0.00		
Enhancement of Value Chain Project for Mango	10% of outlay	50% of cost, based on project proposal.	1.00	518.00	310.80	207.20		
Tackling of emergent /unforeseen requirements of SHMs	Rs.20.00 lakh	50% of cost, based on project proposal.		0.00	0.00	0.00	0.00	
Sub-total			1.00	518.00	310.80	207.20	0.00	0.00
Mission Management								
13								

cashwaf

