

F. No. 33-11/2017-MIDH (AAP)
Government of India
Ministry of Agriculture
Department of Agriculture & Cooperation
(Horticulture Division)

Room No.- 439A
Krishi Bhawan, New Delhi
Dated: 1st June, 2017

To

Director of Horticulture & Mission Director
Government of Gujarat, Directorate of Horticulture
1st Floor, Krishi Bhawan
Sector- 10A, Gandhi Nagar – 382010,
Gujarat

Subject: Implementation of National Horticulture Mission (NHM) under Mission for Integrated Development of Horticulture (MIDH) programme- Approval of Annual Action Plan (AAP) 2017-18-regarding.

Sir,

I am directed to convey approval for implementation of National Horticulture Mission (NHM) programme under MIDH in the State of **Gujarat** during 2017-18 with total outlay of **Rs. 12549.69 lakh** (including Rs. 650.69 Lakh Spill over activity/ unspent balance) as per following details:

(Rs. In lakh)

	GOI Share (60%)	State Share (40%)	Total
Total Outlay-2017-18	7139.4	4759.6	11899.00
Spill over Activity/ Unspent Balance	390.41	260.28	650.69
Total	7529.81	5019.88	12549.69

2. The component wise details of Annual Action Plan, 2017-18 indicating physical targets and financial outlay are enclosed. Details are also available on NHM website. The approval is subject to the following terms and conditions:-

- I. The State Horticulture Mission (SHM) may start implementation of the programme for activities other than project-based and submit the proposals for project based activities for approval of Empowered Committee of MIDH. For the project based activities, for which powers have been delegated to State Level Executive Committee (SLEC), the minutes of SLEC meeting wherein projects are approved may be furnished to this Department along with details of beneficiaries, location, bank loan, etc. to facilitate release of funds.
- II. Expenditure on approved activities shall be in conformity with the norms laid down in the operational guidelines of the scheme.

Satishendra Singh
19/6/17

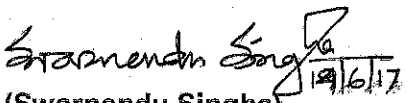
- III. SHM should make advance arrangement for procurement of planting material from accredited nurseries/certified planting material/certified seeds for ensuing season. SHM should have a mechanism in place for the proper certification and distribution of planting material/seeds. Sourcing of planting material/seeds from ICAR institutes, SAUs, KVKs and Government Department is to be given priority over other sources. **Area Expansion shall be restricted to availability of planting material from accredited nurseries/certified Planting Material.** In case of Truthfully Labelled (TL) seeds, it should be procured only from public sector agencies. Merely procurement of the planting material/seed through the public sector agencies like Seed Corporation, Agro Corporation and other agencies do not ensure the quality of planting material/seed as they do not produce the same. SHM should ensure that these public sector agencies procure certified material and in case certified material is not available, seedlings/ TL seeds are to be procured only from ICAR institutes, SAUs, KVKs and Government Departments.
- IV. More focus is to be given on enhancing productivity of horticulture crops for the holistic development supported with infrastructure for Pre- and Post- Harvest Management and Marketing.
- V. To improve the productivity of existing old and senile orchards, there is need to identify gaps and revise the existing strategy for achieving the desired results. A proper mechanism needs to be devised to disseminate technology and train farmers on rejuvenation technology. Exposure visit of farmers should be organized to those institutes/ places where rejuvenation technology has been developed and also adopted by the farmers. Chief Consultants under NHM will visit the State and discuss this matter with the SHM.
- VI. The programme for protected cultivation and lining of Community tanks/ponds should be taken up in close coordination with the Precision Farming Development Centre (PFDC) in the State.
- VII. Protected Cultivation of vegetables should be promoted under NHM in clusters around major cities/metros. These clusters may be provided with other infrastructural facilities like pre-cooling units, cold storages, reefer vans, vending carts etc. and marketing arrangements may be tied up by linking with cooperatives/private retail chains like SAFAL, farmer markets.
- VIII. Organic farming should be linked to certification. No separate funds will be provided for adoption of organic farming alone. Arrangements should also be made by the SHM or concerned agency for the marketing of organic produce. Selection of Service Provider Agencies is to be done by adoption of competitive bidding.
- IX. IPM measures should be need based and are to be taken after clearly identifying the problem of pests/disease in the clusters. INM measures are to be adopted in the clusters to correct soil deficiency and reduce excessive dependence on chemical fertilizers.
- X. The creation of water harvesting structure should be implemented in conjunction with Mahatma Gandhi National Rural Employment Guarantee Scheme (MNREGA) wherever feasible and should be compulsorily linked with the new area expansion and micro-irrigation programmes.
- XI. For implementation of horticulture mechanization, PHM, marketing and mobile/primary processing activities, SHM should make efforts to organize self-help groups, farmers' interest groups, growers' association at local level and also involve Panchayats, Cooperatives, Producers Company etc. In this regard, SHM is to play pro-active role and should appoint one senior level officer as nodal officer and make him responsible for these components.

S. Arvind Singh
19/6/17

- XII. Efforts should also be made for the buyback arrangements of the horticulture produce.
 - XIII. SHM should involve State Agricultural University and ICAR Institutes in the State for the extension activities under NHM.
 - XIV. SHM shall document the Annual Report and success stories and furnish them to DAC&FW.
 - XV. The SHM should also conduct Impact Evaluation Study through independent organization of repute in the State.
 - XVI. While implementing the NHM programme, convergence and synergy should be ensured with the other schemes like Micro Irrigation, RKVY, PKVY, MNREGS, National Mission on Medicinal Plants, AEZs of APEDA, Tribal Sub Plan, Mega Food Parks of Ministry of Food Processing Industries, Watershed Development Programmes, BRGF and Schemes of the State Government.
 - XVII. The Audited Statement of Accounts (ASA) for 2015-16 and Utilization Certificate for 2016-17, if not submitted so far, should be furnished to facilitate release of funds during 2017-18.
 - XVIII. According to the provisions of the Fiscal Responsibilities and Budget Management (FRBM) Act, 2003 and Rules thereof, regular feedback from the implementing agencies on the physical and financial progress of the activities is necessary for periodical review.
 - XIX. The monthly physical and financial progress may be posted on the website www.nhm.nic.in by the 5th of every month and certified hard copy be furnished to this Department by the 10th of every month following the month under report.. Status of project based proposals need also to be uploaded on NHM website.
 - XX. It may be noted that the release of funds would be subject to the furnishing of requisite information as mentioned above. In addition to that, a mid-term review would be undertaken at appropriate time.
3. The SHM is also requested to implement the scheme keeping in view the broad discussions held during review meeting held on 2nd – 3rd May, 2017.
 4. This issues with the approval of JS (MIDH).

Encl: as above

Yours faithfully,


(Swarnendu Singha)

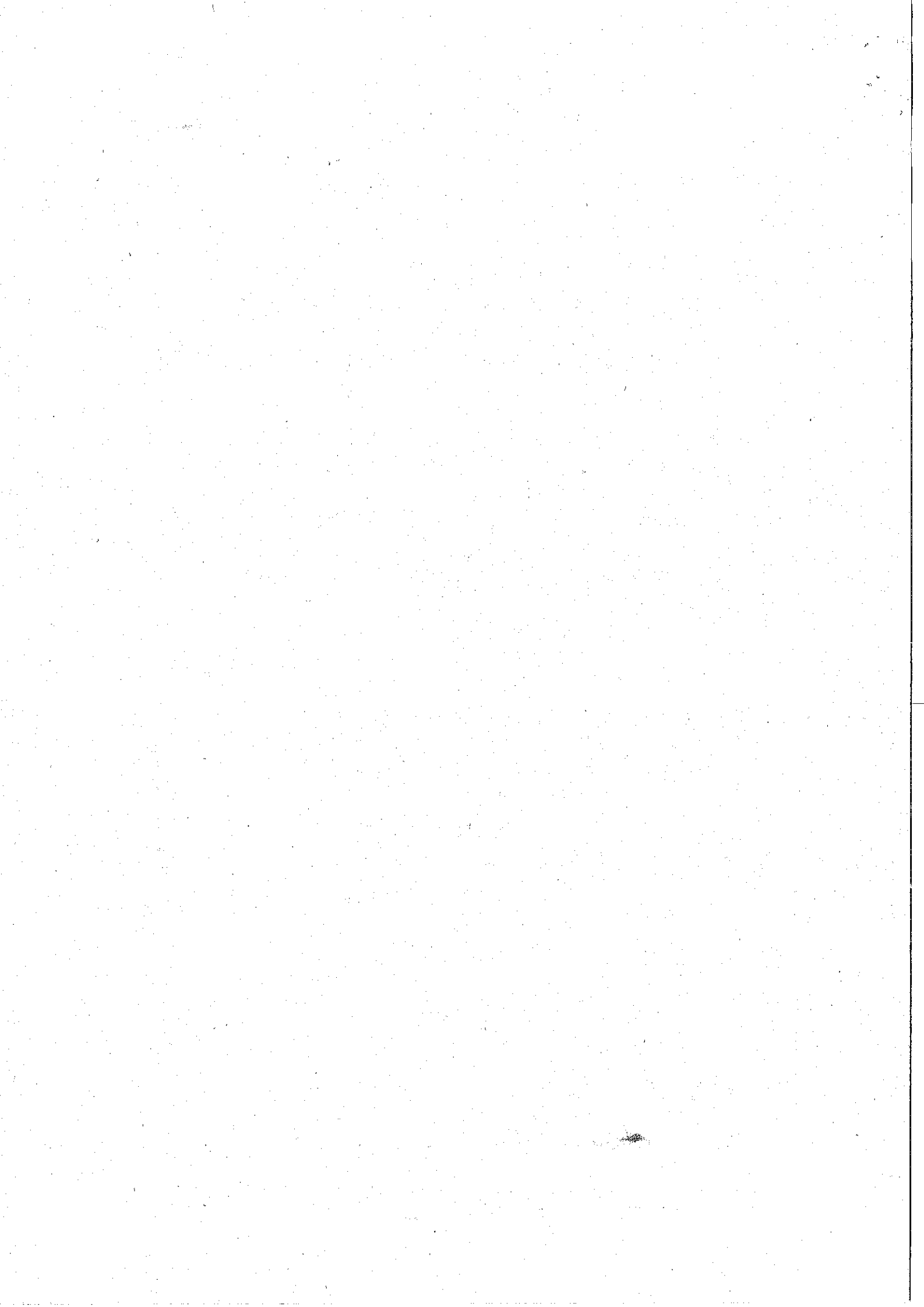
Section Officer (MIDH)

(O) 011-2338 8474

E-mail id: swarnendusingha@gmail.com

Copy to:

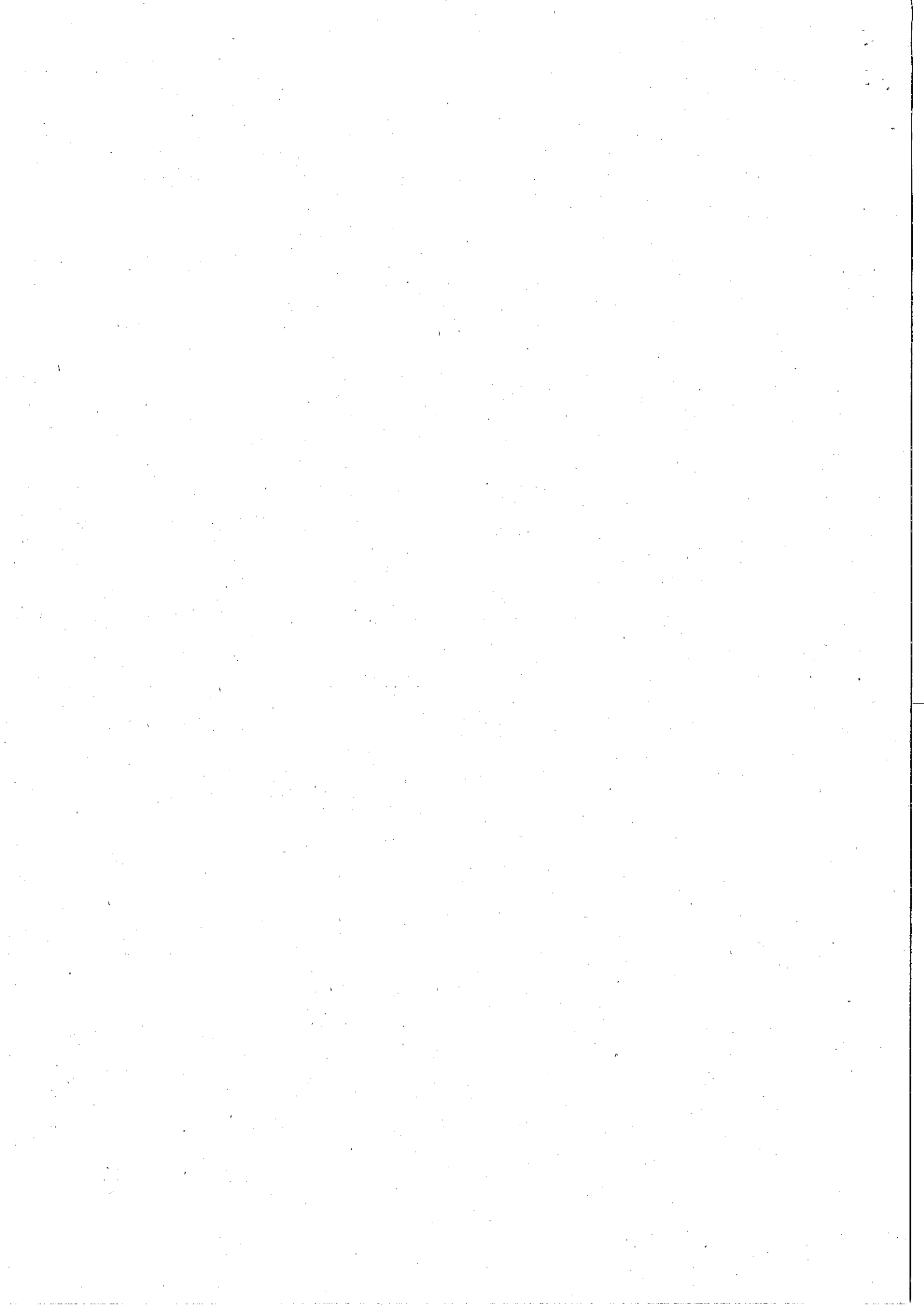
1 Tech. Dir.(NIC) for uploading



Summary of Action Plan 2017-18 Gujarat

#	Component	Unit	2017-18					Spill Over	
			Phy Target	Fin. Outlay	Gov Share	State Share	% of Outlay	Phy Target	Fin. Outlay
1	Nursery and planting Materials	No.	38.0	772.7	463.6	309.1	6.5	1.0	100.0
2	Establishment of new gardens	Ha.	6592.3	1456.6	874.0	582.7	12.2	290.0	64.0
3	Maintenance 1 & 2 Year		2850.0	171.0	102.6	68.4	1.4	0.0	0.0
4	Mushroom production	Ha.	3.0	22.0	13.2	8.8	0.2	0.0	0.0
5	Rejuvenation/ replanting	Ha.	100.0	20.0	12.0	8.0	0.2	0.0	0.0
6	Promotion of IPM/INM	Ha.	1.0	45.0	27.0	18.0	0.4	0.0	0.0
7	Centre of Excellence	No.	0.0	0.0	0.0	0.0	0.0	1.0	111.6
8	FLD+ PFDC+GAP	No.	504.0	125.0	75.0	50.0	1.1	0.0	0.0
9	Post Harvest Management	No.	100.0	5409.8	3245.9	2163.9	45.5	1.0	255.0
10	Markets	No.	68.0	425.5	255.3	170.2	3.6	1.0	5.9
11	Protected cultivation	Ha.	2047.9	1709.0	1025.4	683.6	14.4	10.0	114.1
12	Horticulture Mechanization	No.	400.0	240.0	144.0	96.0	2.0	0.0	0.0
13	Beekeeping	No.	12031.0	102.4	61.4	41.0	0.9	0.0	0.0
14	Human Resource Development (HRD)	No.	18174.0	170.1	102.0	68.0	1.4	0.0	0.0
15	Special Interventions (value chain project)	No.	1.0	1000.0	600.0	400.0	8.4	0.0	0.0
16	Others (Awareness, Survey, Seminars, TSG etc)		83.0	166.0	99.6	66.4	1.4	0.0	0.0
17	Mission Management/ TSG			64.0	38.4	25.6	0.5	0.0	0.0
G. Total				11899.00	7139.40	4759.60	100.00	304.00	650.69

S. Arvind Singh
19/6/17



Annual Action Plan of Gujarat 2017-18

Action Plan 2017-18

(R. in Lakhs)

S. No	Activity	Maximum permissible cost	Pattern of Assistance	AAP 2017-18			Spill Over		Remark	
				Phy Target	Fin. Outlay	GOI Share 60%	State Share 40%	Phy Target		Fin. Outlay
1	2	3	4	5	6	7	8			
1	Plantation Infrastructure and Development									
	Production of planting material Public Sector									
	Small Nursery (1 ha)									
	a) Public Sector	Rs. 15 lakh/one ha unit	100% to public sector and in case of private sector, credit linked back-ended subsidy @ 50% of cost, subject to a maximum of Rs. 7.50 lakh/unit, as project based activity. Each nursery will produce a minimum of 25,000 numbers of mandated perennial vegetatively propagated fruit plants/tree spices/plantation crops aromatic plants, per year, duly certified for its quality.		0.00	0.00	0.00		0.00	Minutes of SLEC meeting to be submitted along with details of beneficiaries, location, bank loan etc to facilitate release of funds.
	b) Private Sector	Rs. 15 lakh/one ha unit	100% to public sector and in case of private sector, credit linked back-ended subsidy of cost, subject to a maximum of Rs. 7.50 lakh/unit, as project based activity. Each nursery will produce a minimum of 25,000 numbers of mandated perennial vegetatively propagated fruit plants/tree spices/plantation crops per year, aromatic plants, duly certified for its quality.	2	15.00	9.00	6.00		0.00	Need to specify crop
	Strengthening of existing Tissue Culture (TC) units									
	a) Public Sector	Rs. 20.00 lakh	100% of cost to public sector		0.00	0.00	0.00		0.00	
	b) Private sector	Rs. 20.00 lakh	50% of cost to private sector		0.00	0.00	0.00		0.00	
	Setting up of new TC Units.									
	a) Public Sector	Rs. 250.00 lakh	100% of cost to public sector	1	250.00	150.00	100.00		0.00	Project to be submitted
	b) Private sector	Rs. 250.00 lakh	40% of cost to private sector	3	300.00	180.00	120.00		0.00	Project to be submitted
	Seed production for vegetables and spices									
	Open pollinated crops									
	a) Public Sector	Rs. 35,000/ha	100% of cost, limited to 5 ha. Output target of seed for each crop will be fixed by the individual state.		0.00	0.00	0.00		0.00	

2 of 14

Sardarwardn Singh
14/06/2017

b) Private sector	Rs. 35,000/ha	35% in general areas and 50% in NE & Himalayan States, Tribal Sub Plans (TSP) areas, Andaman & Nicobar & Lakshadweep Islands, limited to 5 ha. Output target of seed for each crop will be fixed by the individual state.	20	2.45	1.47	0.98	0.00	0.00
Hybrid seeds								
a) Public Sector	Rs. 1.50 lakh/ha	100% of cost, limited to 5 ha. Output target of seed for each crop will be fixed by the individual state.		0.00	0.00	0.00	0.00	0.00
b) Private sector	Rs. 1.50 lakh/ha	35% in general areas and 50% in NE & Himalayan States, Tribal Sub Plans (TSP) areas, Andaman & Nicobar & Lakshadweep Islands, limited to 5 ha. Output target of seed for each crop will be fixed by the individual state.	10	5.25	3.15	2.10	0.00	0.00
Import of planting material for trial & demonstration purpose (By State Government, PSU)								
a) Public sector	Rs. 100.00 lakh	100% of cost for State Govt. PSUs, as project based	1	100.00	60.00	40.00	0.00	do
Seed infrastructure								
a) Public sector	Rs. 200.00 lakh	100% of cost		0.00	0.00	0.00	0.00	0.00
b) Private sector	Rs. 200.00 lakh	50% of cost	1	100.00	60.00	40.00	1	100.00
Sub-total Planting material			38.00	772.70	463.62	309.08	1.00	100.00
Establishment of new gardens / Area Expansion								
Fruit crops other than cost intensive crops using normal spacing (For a maximum area of 4 ha per beneficiary)								
Fruits - Perennials								
(a) Cost intensive crops								
v) Banana (TC)								
a) Integrated package with drip irrigation.	Rs. 3.00 lakh/ha	Maximum of Rs. 1.20 lakh/ha (40% of cost) for meeting the expenditure on planting material and cost of material for drip system, INM/IPM etc., in 2 installments (75:25).		0.00	0.00	0.00	0.00	0.00
b) Without integration	Rs. 1.25 lakh/ha.	Max. of Rs. 0.50 lakh per ha, (40% of cost) for meeting the expenditure on planting material and cost of INM/IPM in 2 installments (75:25). For (a) and (b) above, in the case of TSP areas, Andaman & Nicobar and Lakshadweep Islands, assistance will be @ 50% of cost in 2 installments (75:25).	500	150.00	90.00	60.00	100	26.00
Sub total			500	150.00	90.00	60.00	100	26.00
vii) Papaya								

Sataraman Singh 14/06/17

30/14

a) Integrated package with drip irrigation.	Rs. 2.00 lakh/ha.	Maximum of Rs. 0.80 lakh/ha (40% of the cost) for meeting expenditure on planting material, drip irrigation and cost of material for INM/IPM, in 2 installments (75:25).			0.00	0.00	0.00	0.00	0.00	0.00	0.00	
b) Without integration	Rs. 60,000/ha	Maximum of Rs. 0.30 lakh/ha (50 % of cost) for meeting the expenditure on planting material and cost of INM/IPM in 2 installments (75:25).	506.0	113.85	68.31	45.54	40.0	8.00				
Sub total			506	113.85	68.31	45.54	40	8.00				
ix) High density planting (mango, guava, litchi, pomegranate, apple, citrus etc).												
a) Integrated package with drip irrigation	Rs. 1.50 lakh /ha	Maximum of Rs. 0.60 lakh per ha. (40% of cost) for meeting the expenditure on planting material, cost of drip system, INM/IPM, canopy management etc., in 3 installments of 60:20:20 subject to survival rate of 75% in 2nd year and 90% in 3 rd year).		0.00	0.00	0.00		0.00				
b) Without integration.	Rs. 1.00 lakh/ha.	Maximum of Rs. 0.40 lakh/ha (40% of the cost) for meeting the expenditure on planting material and cost of INM/IPM in 3 installments (60:20:20). For (a) and (b) above, in the case of TSP areas, Andaman & Nicobar and Lakshadweep Islands, assistance will be @ 50% of cost. In 3 installments of 60:20:20 subject to survival rate of 75% in 2nd year and 90% in 3rd year)	2626.0	630.24	378.14	252.10		0.00				0.00
Sub total			2626	630.24	378.14	252.10	0	0.00				
(b) Fruit crops other than cost intensive crops using normal spacing												
a) Integrated package with drip irrigation	Rs. 1.00 lakh/ha	Maximum of Rs. 0.40 lakh/ ha. (40% of cost) for meeting the expenditure on planting material, cost of drip system, INM/IPM, canopy management etc in 3 installments of 60:20:20 subject to survival rate of 75% in 2nd year & 90% in 3rd year for perennial crops and for non perennial crops in 2 installments of 75:25.		0.00	0.00	0.00		0.00				0.00

4 of 4

Saravanan Sanga
14/06/17

b) Without Integration	Rs. 60,000/ha	Maximum of Rs. 0.30 lakh/ha (50 % of cost) for meeting the expenditure on planting material and cost of INM/IPM in 3 installments of 60:20:20.	500	85.57	51.34	34.23	0.00	Mango
Sub total			500	86	51	34	0	0
Maintenance without Integration								
1st Year			1500.00	90.00	54.00	36.00		0.00
2nd Year			1350.00	81.00	48.60	32.40		0.00
Sub total maintenance			2850.00	171.00	102.60	68.40	0.00	0.00
Vegetable (For maximum area of 2 ha per beneficiary)								
Hybrid	Rs.50,000/ ha	40% of cost in general areas	2000	400.00	240.00	160.00	150	30.00
Sub-total			2000.00	400.00	240.00	160.00	150	30.00
3								
Flowers (For a maximum of 2 ha per beneficiary)								
Cut flowers								
Small & Marginal Farmers	Rs. 1.00 lakh/ha	40% of cost	10.0	2.50	1.50	1.00		0.00
Other farmers	do	25% of the cost		0.00	0.00	0.00		0.00
Bulbous flowers								
Small & Marginal Farmers	Rs. 1.50 lakh/ha	40 % of the cost	25.0	15.00	9.00	6.00		0.00
Other farmers	do	25% of cost	25.3	9.47	5.68	3.79		0.00
Loose Flowers								
Small & Marginal Farmers	Rs. 40,000/ha	40% of cost	100.0	16.00	9.60	6.40		0.00
Other farmers	do	25% of cost	100.0	10.00	6.00	4.00		0.00
Sub-total flowers			260.3	52.97	31.78	21.19	0.0	0.00
4								
Spices (For a maximum area of 4 ha per beneficiary)								
Seed spice and Rhizomatic spices	Rs.30,000/ha	Maximum of Rs. 12,000/- per ha. (40% of cost) for meeting the expenditure on planting material and cost of material for INM/IPM etc).	200	24.00	14.40	9.60		0.00
Perennial spices (black pepper)	Rs. 50,000/ha	Maximum of Rs. 20,000/- per ha (@40% of cost) for meeting the expenditure on planting material and cost of material for INM/IPM etc. For (i) and (ii) above, in the case of TSP areas, Andaman and Lakshadweep Islands, assistance will be @ 50% of cost.		0.00	0.00	0.00		0.00
Sub-total spices			200	24.00	14.40	9.60	0	0.00
Grand Total Area Expansion			6592.25	1456.63	873.98	582.65	290.00	64.00
Grand Total Area Expansion maintenance			2850.00	171.00	102.60	68.40	0.00	0.00
Mushrooms								
Production unit								
Public Sector	Rs. 20.00 lakh/ unit.	100% of the cost.		0.00	0.00	0.00		0.00

5 of 14

Sharmendra Singh 14/06/17

i) Tubular structure	Rs. 710/Sq.m	50% of cost limited to 4000 Sq.m per beneficiary.	19.00	674.50	404.70	269.80	8.00	80.52
Plastic Tunnels	Rs. 60/Sq.m	50% of cost limited 1000 sq. m per beneficiary.	2	6.00	3.60	2.40		0.00
Plastic Tunnels	Rs. 75/Sq.m for hilly areas.	50% of cost limited 1000 sq. m per beneficiary.		0.00	0.00	0.00		0.00
Walk in tunnels	Rs. 600/ Sq.m	50% of the cost limited to 4000 sq.m. (each unit not to exceed 800 Sq. m per beneficiary).	1	30.00	18.00	12.00		0.00
e) Anti Bird/Anti Hail Nets	Rs.35/- per Sq.m	50% of cost limited to 5000 Sq.m per beneficiary.		0.00	0.00	0.00		0.00
f) Cost of planting material & cultivation of high value vegetables grown in poly house	Rs.140/Sq. m	50% of cost limited to 4000 Sq.m per beneficiary.	10	69.81	41.89	27.92		0.00
g) Cost of planting material & cultivation of Orchid & Anthurium under poly house/shade net house.	Rs. 700/Sq.m	50% of cost limited to 4000 Sq. m per beneficiary.	1.14	39.90	23.94	15.96		0.00
h) Cost of planting material & cultivation of Carnation & Gerbera under poly house/shade net house.	Rs. 610/Sq.m	50% of cost limited to 4000 Sq. m per beneficiary.	2.00	60.00	36.00	24.00		0.00
i) Cost of planting material & cultivation of Rose and liliun under poly house/shade net house	Rs. 426/Sq.m	50% of cost limited to 4000 Sq. m per beneficiary.	1.88	40.04	24.03	16.02		0.00
Sub-total protected cultivation			2047.91	1708.96	1025.38	683.58	10.00	114.13
Promotion of Integrated Nutrient Management(INM)/ Integrated Pest								
Bio control lab					0.00	0.00		
a) Public Sector	Rs. 90.00 lakh/unit	100% to Public sector		0.00	0.00	0.00		0.00
b) Private Sector	Rs. 90.00 lakh/unit	50% to private sector.	1	45.00	27.00	18.00		0.00
Sub-total INM / IPM			1	45.00	27.00	18.00	0	0.00
Certification for Good Agricultural Practices (GAP), including infrastructure	Rs. 10,000/ ha	50% of the cost for maximum of 4ha/beneficiary.	500	25.00	15.00	10.00		0.00
CoE								
Centre of Excellence for Horticulture	Rs.1000.00 lakh/ centre	100% of cost to public sector. This can be established through bi-lateral co-operation also.			0.00	0.00	1	111.62
Total CoE			0	0.00	0.00	0.00	1	111.62
Pollination support through beekeeping								
Production of nucleus stock (Public sector)	Rs. 20.00 lakh	100% of the cost.		0.00	0.00	0.00		0.00
Production of bee colonies by bee breeder	Rs. 10.00 lakh	40% of cost for producing min. of 2000 colonies / year	1	4.00	2.40	1.60		0.00
Honey bee colony	Rs.2000/colony of 8 frames	40% of cost limited to 50 colonies / beneficiary.	6000	48.00	28.80	19.20		0.00
Hives	Rs 2000/ per hive.	40% of cost limited to 50 colonies / beneficiary.	6000	48.00	28.80	19.20		0.00

S. Aravindhan Sanyal 14/06/17

7 of 15

Outside India	Rs. 4.00 lakh / participant	Project Based. 100% of air/rail travel cost.		0.00	0.00	0.00	0.00		
Within the State	Rs. 300/day per participant plus TA/DA, as admissible	100% of the cost.	1500	4.00	2.40	0.00	0.00		
Study tour to progressive States/ units (group of minimum 5 participants)	Rs. 800/day per participant plus TA/DA, as admissible	100% of the cost.	20	1.00	0.60	0.40	0.00		100 men days
Outside India	Rs. 6.00 lakh / participant	100% of the cost on actual basis.	4	4.00	2.40	1.60	0.00		Project to be submitted
Sub-total			18174	170	102	68	0		
INTEGRATED POST HARVEST MANAGEMENT									
Pack house / On farm collection & storage unit	Rs. 4.00 lakh/unit with size of 9Mx6M	50% of the capital cost.	10	20.00	12.00	8.00	0.00		Minutes of SLEC meeting to be submitted along with details of beneficiaries, location, etc to facilitate release of funds.
Integrated pack house with facilities for conveyer belt, sorting, grading units, washing, drying and weighing.	Rs. 50.00 lakh per unit with size of 9Mx18M	Credit linked back-ended subsidy @ 35% of the cost of project in general areas and 50% of cost in case Hilly & Scheduled areas, per beneficiary.							
a) General Area	Rs. 50.00 lakh per unit with size of 9Mx18M	Credit linked back-ended subsidy @ 35% of the cost of project in general areas and 50% of cost in case Hilly & Scheduled areas, per beneficiary.	6	105.00	63.00	42.00	0.00		
b) Hilly Area	Rs. 50.00 lakh per unit with size of 9Mx18M	Credit linked back-ended subsidy @ 35% of the cost of project in general areas and 50% of cost in case Hilly & Scheduled areas, per beneficiary.		0.00	0.00	0.00	0.00		
Pre-cooling unit	Rs. 25.00 lakh / unit with capacity of 6MT.	Credit linked back-ended subsidy @ 35% of the cost of project in general areas and 50% of cost in case Hilly & Scheduled areas, per beneficiary.	4	35.00	21.00	14.00	0.00		
Pre-cooling unit (Hilly areas)	Rs. 25.00 lakh / unit with capacity of 6MT.	Credit linked back-ended subsidy @ 35% of the cost of project in general areas and 50% of cost in case Hilly & Scheduled areas, per beneficiary.		0.00	0.00	0.00	0.00		
Cold room (staging)	Rs. 15.00 lakh/ unit of 30 MT capacity	Credit linked back-ended subsidy @ 35% of the cost of project in general areas and 50% of cost in case Hilly & Scheduled areas, per beneficiary.	4	21.00	12.60	8.40	0.00		
Cold room (staging) (Hilly areas)	Rs. 15.00 lakh/ unit of 30 MT capacity	Credit linked back-ended subsidy @ 35% of the cost of project in general areas and 50% of cost in case Hilly & Scheduled areas, per beneficiary.		0.00	0.00	0.00	0.00		
Mobile pre-cooling unit	Rs. 25.00 lakh	Credit linked back-ended subsidy @ 35% of the cost of project in general areas and 50% of cost in case Hilly & Scheduled areas, per beneficiary.		0.00	0.00	0.00	0.00		

9 of 14

Signature: *[Handwritten Signature]*
Date: 14/06/17

Mobile pre-cooling unit (Hilly areas)	Rs. 25,00 lakh	Credit linked back-ended subsidy @ 35% of the cost of project in general areas and 50% of cost in case Hilly & Scheduled areas, per beneficiary.			0.00	0.00	0.00	0.00	0.00	0.00	0.00	0.00	0.00	Project to be submitted
Cold Storage (Construction, Expansion and Modernisation)														
i) Cold storage units Type 1 - basic mezzanine structure with large chamber (of >250 MT)														
a) General Area	Rs. 8,000/MT, (max 5,000 MT capacity)	Credit linked back-ended subsidy @ 35% of the cost of project in general areas and 50% of cost in case Hilly & Scheduled areas, per beneficiary.	35	4366.00	2619.60	1746.40						0.00		Project to be submitted
b) Hilly Area	Rs. 8,000/MT, (max 5,000 MT capacity)	Credit linked back-ended subsidy @ 35% of the cost of project in general areas and 50% of cost in case Hilly & Scheduled areas, per beneficiary.		0.00	0.00	0.00						0.00		Project to be submitted
ii) Cold Storage Unit Type 2 - PEB structure for multiple temperature and product use, more														
a) General Area	Rs. 10,000/MT, (max 5,000 MT capacity)	Credit linked back-ended subsidy @ 35% of the cost of project in general areas and 50% of cost in case Hilly & Scheduled areas, per beneficiary.	2	70.00	42.00	28.00						0.00		Project to be submitted
b) Hilly Area	Rs. 10,000/MT, (max 5,000 MT capacity)	Credit linked back-ended subsidy @ 35% of the cost of project in general areas and 50% of cost in case Hilly & Scheduled areas, per beneficiary.		0.00	0.00	0.00						0.00		Project to be submitted
iii) Cold Storage Units Type 2 with add on technology for Controlled Atmosphere														
a) General Area	Additional Rs. 10,000/MT for add on components of controlled atmosphere technology. Details are as per Appendix - II	Credit linked back-ended subsidy @ 35% of the cost of project in general areas and 50% of cost in case Hilly & Scheduled areas, per beneficiary.	2	280.00	168.00	112.00						0.00		Project to be submitted
b) Hilly Area	Additional Rs. 10,000/MT for add on components of controlled atmosphere technology. Details are as per Appendix - II	Credit linked back-ended subsidy @ 35% of the cost of project in general areas and 50% of cost in case Hilly & Scheduled areas, per beneficiary.		0.00	0.00	0.00						0.00		Project to be submitted
Technology induction and modernisation of cold-chain														
a) General Area	Max Rs. 250.00 lakh for modernization of PLC equipment, packaging lines, dock levelers, advanced graders, alternate technologies, stacking systems,	Credit linked back-ended subsidy @ 35% of the cost of project in general areas and 50% of cost in case Hilly & Scheduled areas, per beneficiary.	15	183.75	110.25	73.50						0.00		Project to be submitted
b) Hilly Area	Max Rs. 250.00 lakh for modernization of PLC equipment, packaging lines, dock levelers, advanced graders, alternate technologies, stacking systems,	Credit linked back-ended subsidy @ 35% of the cost of project in general areas and 50% of cost in case Hilly & Scheduled areas, per beneficiary.		0.00	0.00	0.00						0.00		Project to be submitted

Examiner's Sign 14/06/17

C.A/M.A. Storage units -	Rs. 32,000/ MT for 5000 MT capacity	Credit linked back-ended subsidy @40% of the cost of project in General areas.		0.00	0.00	0.00	0.00	0.00	Project to be submitted
Refer vans/ containers (general areas)									
a) General Area	Rs. 26.00 lakh for 9 MT (NHM & HMNEH), and prorata basis for lesser capacity, but not below 4 MT.	Credit linked back-ended subsidy @ 35% of the cost of project in general areas and 50% of cost in case of Hilly & Scheduled areas, per beneficiary.	10	90.00	54.00	36.00	0.00	0.00	Project to be submitted
b) Hilly Area	Rs. 26.00 lakh for 9 MT (NHM & HMNEH), and prorata basis for lesser capacity, but not below 4 MT.	Credit linked back-ended subsidy @ 35% of the cost of project in general areas and 50% of cost in case of Hilly & Scheduled areas, per beneficiary.		0.00	0.00	0.00	0.00	0.00	Project to be submitted
Ripening chamber project in general areas	Rs. 1.00 lakh/MT.	-do-	8	169.00	101.40	67.60	0.00	0.00	Each unit of 1008 MT
Ripening chamber project in Hilly areas	Rs. 1.00 lakh/MT.	-do-		0.00	0.00	0.00	0.00	0.00	
Evaporative / low energy cool chamber (8 MT)	Rs. 5.00 lakh/unit	50% of the total cost.		0.00	0.00	0.00	0.00	0.00	Minutes of SLEC meeting to be submitted along with details of beneficiaries, location, etc to facilitate release of funds.
Primary/ Mobile / Minimal processing unit									
a) General Area	Rs. 25.00 lakh/unit.	Credit linked back-ended subsidy @ 40% of the capital cost of project in general areas and 55% in case of Hilly & Scheduled areas, per beneficiary.	2	20.00	12.00	8.00	0.00	0.00	Project to be submitted
b) Hilly Area	Rs. 25.00 lakh/unit.	Credit linked back-ended subsidy @ 40% of the capital cost of project in general areas and 55% in case of Hilly & Scheduled areas, per beneficiary.		0.00	0.00	0.00	0.00	0.00	Project to be submitted
Integrated Cold Chain supply System									
a) General Area	Project Based. Project should comprise of minimum two components listed under C.1 to C.13 above, with maximum cost of Rs. 600.00 lakh.	Credit linked back-ended subsidy @ 35% of the cost of project in general areas and 50% of cost in case Hilly & Scheduled areas, per beneficiary.	2	50.00	30.00	20.00	1	255.00	
b) Hilly Area	Project Based. Project should comprise of minimum two components listed under C.1 to C.13 above, with maximum cost of Rs. 600.00 lakh.	Credit linked back-ended subsidy @ 35% of the cost of project in general areas and 50% of cost in case Hilly & Scheduled areas, per beneficiary.		0.00	0.00	0.00		0.00	

Satishnandan Singh 14/06/17

Sub-total																			
12	ESTABLISHMENT OF MARKETING INFRASTRUCTURE FOR																		
	Rural Markets/ Apni mandies/Direct markets																		
a)	General Area	Rs. 25.00 lakh	Credit linked back-ended subsidy @ 40% of the capital cost of project in general areas and 55% in case of Hilly & Scheduled areas, per beneficiary.	1	10.00	6.00	4.00	0.00	0.00	0.00	0.00	0.00	0.00	0.00	0.00	0.00	0.00	0.00	Project to be submitted
b)	Hilly Area	Rs. 25.00 lakh	Credit linked back-ended subsidy @ 40% of the capital cost of project in general areas and 55% in case of Hilly & Scheduled areas, per beneficiary.		0.00	0.00	0.00	0.00	0.00	0.00	0.00	0.00	0.00	0.00	0.00	0.00	0.00	0.00	Project to be submitted
	Retail Markets/ outlets (environmentally controlled)																		
a)	General Area	Rs. 15.00 lakh /unit	Credit linked back-ended subsidy @ 35% of the capital cost of project in general areas and 50% in case of Hilly & Scheduled areas, per beneficiary.	11	44.00	26.40	17.60	0.00	0.00	0.00	0.00	0.00	0.00	0.00	0.00	0.00	0.00	0.00	Minutes of SLEC meeting to be submitted along with details of beneficiaries, location, etc to facilitate release of funds.
b)	Hilly Area	Rs. 15.00 lakh /unit	Credit linked back-ended subsidy @ 35% of the capital cost of project in general areas and 50% in case of Hilly & Scheduled areas, per beneficiary.		0.00	0.00	0.00	0.00	0.00	0.00	0.00	0.00	0.00	0.00	0.00	0.00	0.00	0.00	Minutes of SLEC meeting to be submitted along with details of beneficiaries, location, etc to facilitate release of funds.
	Static/Mobile Vending Cart/ platform with cool chamber.	Rs. 30,000/ unit	50% of total cost.	10	1.50	0.90	0.60	0.00	0.00	0.00	0.00	0.00	0.00	0.00	0.00	0.00	0.00	0.00	Minutes of SLEC meeting to be submitted along with details of beneficiaries, location, etc to facilitate release of funds.
	Functional Infrastructure for:																		
	Collection, sorting/ grading, packing units etc.																		
a)	General Area	Rs. 15.00 lakh	Credit linked back-ended subsidy @ 40% of the capital cost of project in general areas and 55 % in case of Hilly & Scheduled areas, per beneficiary.	45.00	270.00	162.00	108.00	1.00	5.94										
b)	Hilly Area	Rs. 15.00 lakh	Credit linked back-ended subsidy @ 40% of the capital cost of project in general areas and 55 % in case of Hilly & Scheduled areas, per beneficiary.		0.00	0.00	0.00		0.00										
	Quality control/ analysis lab	Rs. 200.00 lakh	100% of the total cost to public sector as credit linked back ended subsidy.		0.00	0.00	0.00		0.00										
	Quality control/ analysis lab	Rs. 200.00 lakh	50% of cost to private sector as credit linked back ended subsidy.	1.00	100.00	60.00	40.00		0.00										
	Gravily operated rope way in hilly areas	Rs. 15.00 lakh/km	Credit linked back-ended subsidy @ 50% of capital costs in Hilly areas.		0.00	0.00	0.00		0.00										
	Sub-total			68.00	425.50	255.30	170.20	1.00	5.94										
	SPECIAL INTERVENTIONS																		
	Innovative interventions not covered under any GOI schemes	10% of outlay	50% of cost, based on project proposal.			0.00	0.00												

12 of 14

S. Srinivasan Singh 14/06/17

Value Chain Analysis	10% of outlay	50% of cost, based on project proposal.	1.00	1000.00	600.00	400.00	Specify cluster and crop
Tackling of emergent /unforeseen requirements of SHMs	Rs.20.00 lakh	50% of cost, based on project proposal.		0.00	0.00	0.00	0.00
Sub-total			1.00	1000.00	600.00	400.00	0.00
Mission Management							
State & Districts Mission Offices and implementing agencies for administrative expenses, project, preparation, computerization, contingency etc.	5% of total annual expenditure on the basis of appraised needs to State Horticulture Mission (SHM) / implementing Agencies	100% assistance.		64.00	38.40	25.60	
Institutional Strengthening, hire/purchase of vehicles, hardware/software	Project based	100% assistance.		74.26	44.56	29.70	
Seminars, conferences, workshops, exhibitions, Kisan Mela, horticulture shows, honey festivals etc.							Minutes of SLEC meeting to be submitted along with details of beneficiaries, location, etc to facilitate
International level	Rs. 7.50 lakh per event.	100% of cost per event of 4 days, on pro rata basis.		0.00	0.00	0.00	
National level	Rs. 5.00 lakh per event.	100% of cost per event of two days.	1	5.00	3.00	2.00	
State level	Rs. 3.00 lakh /event	100% assistance subject to a maximum of Rs.3.00 lakh per event of two days.	5	10.00	6.00	4.00	
District level	Rs. 2.00 lakh /event	100% assistance subject to a maximum of Rs.2.00 lakh per event of two days.	21	21.00	12.60	8.40	
Information dissemination through publicity, printed literature etc and local advertisements	Rs. 0.40 lakh/block	100% of cost.	40	16.00	9.60	6.40	
Development of technology packages in electronic form to be shared through IT network	Rs. 1.00 lakh/ district	100% of Cost	16	10.75	6.45	4.30	
Technical Support Group (TSG) at State Level for hiring experts/staff, studies, monitoring & concurrent evaluation/evaluation, mass media, publicity, video conference etc.	Project based, subject to a ceiling of Rs. 50.00 lakh per annum/state	100% of cost		29.00	17.40	11.60	
Promotion of Farmer Producers Organization/ FPO/FIG Farmer Interest Groups of 15-20 farmers/20 ha, Growers Associations and tie up with Financial Institution and Aggregators.	As per norms issued by SFAC.	As per norms issued by SFAC from time to time.			0.00	0.00	

Satyanandh Sanyal 14/06/2017

	Baseline survey and Strengthening horticultural statistical data base	Rs. 100.00 lakh for large states, Rs. 50.00 lakh for small states and Rs. 25.00 lakh for very small states/ UTs.	100% of cost as one time grant on survey related activities.			0.00	0.00	0.00	0.00	0.00		
	Sub-total			83.00	230.01	138.01	92.00	304.00	0.00			
	Grand Total			42993.16	11899.00	7139.40	4759.60			650.69		

S. Aravindan
 14/06/17

