

F. No. 33-25/2016-MIDH (AAP)
Government of India
Ministry of Agriculture & Farmers Welfare
Department of Agriculture, Cooperation & Farmers Welfare
(Horticulture Division)

Room No.-434
Krishi Bhawan, New Delhi-1
Dated: 13th February, 2017

To
Mission Director
Commissioner of Horticulture (IC)
Govt. of Telangana Public Gardens, Nampally
Hyderabad-500004

Subject: Proposal for inter-component changes of the targets under approved components for Telangana under MIDH for the year 2016-17- reg.

Sir,

I am directed to refer to your letter No. A.E./374/2016-17 dated 31.01.2017 on the subject mentioned above and to convey the approval of competent authority for inter-component changes in physical and financial targets in Annual Action Plan (AAP) 2016-17 as under:

Rs in Lakhs

| S.NO | Activities | Unit | Physical Target | | Financial Outlay | | % |
|------|--|------|-----------------|----------------|------------------|---------------|-------|
| | | | Old | Rev | Old | Rev | |
| 1 | Nursery and planting Materials | No. | 1.0 | 3.0 | 250.0 | 115.0 | 2.1 |
| 2 | Establishment of new gardens / Area Exp. | Ha. | 4837.2 | 4474.1 | 695.2 | 593.5 | 10.8 |
| 3 | Maintenances 1 & 2 Year | Ha. | 5596.7 | 5596.7 | 307.3 | 307.3 | 5.6 |
| 4 | Mushrooms | | 0.0 | 0.0 | 0.0 | 0.0 | 0.0 |
| 5 | Rejuvenation/ replanting | Ha. | 0.0 | 0.0 | 0.0 | 0.0 | 0.0 |
| 6 | Creation of Water resources | No. | 367.0 | 367.0 | 313.8 | 313.8 | 5.7 |
| 7 | Protected cultivation | Ha. | 2024.0 | 2028.7 | 1087.6 | 1287.6 | 23.5 |
| 8 | Promotion of IPM/INM | Ha. | 0.0 | 0.0 | 0.0 | 0.0 | 0.0 |
| 9 | Adoption of Org. Farm | Ha. | 3376.0 | 3376.0 | 151.9 | 151.9 | 2.8 |
| 10 | Centre of Excellence | No. | 0.0 | 0.0 | 0.0 | 0.0 | 0.0 |
| 11 | Beekeeping | No. | 0.0 | 0.0 | 0.0 | 0.0 | 0.0 |
| 12 | Horticulture Mechanization | No. | 811.0 | 811.0 | 211.8 | 211.8 | 3.9 |
| 13 | FLD | No. | 133.0 | 234.0 | 153.2 | 152.9 | 2.8 |
| 14 | Human Resource Development (HRD) | No. | 11587.0 | 11587.0 | 180.3 | 180.4 | 3.3 |
| 15 | Post Harvest Management | No. | 21.0 | 109.0 | 1617.5 | 1816.3 | 33.1 |
| 16 | Markets | No. | 0.0 | 2.0 | 200.0 | 20.0 | 0.4 |
| 17 | Awareness, survey, Special Intervention etc. | | 34.0 | 65.0 | 40.9 | 59.2 | 1.1 |
| 18 | Mission Management | | 0.0 | 0.0 | 274.5 | 274.5 | 5.0 |
| 19 | Institutional Strengthening | | 0.0 | 0.0 | 0.0 | 0.0 | 0.0 |
| 20 | TSG at State Level | | 0.0 | 0.0 | 0.0 | 0.0 | 0.0 |
| | Sub Total | | 28787.9 | 28653.5 | 5484.0 | 5484.0 | 100.0 |
| 21 | Committed/Spillover Activities | | 5735.4 | 5735.4 | 3164.1 | 3164.1 | |
| | Sub Total | | 5735.4 | 5735.4 | 3164.1 | 3164.1 | |
| | G. Total | | 34523.3 | 34388.9 | 8648.1 | 8648.1 | |

2. There is no change in the financial outlay.

3. It is requested that the revised AAP may be implemented as per the provisions and norms of the NHM scheme. Revised AAP 2016-17 as enclosed is being uploaded on the NHM website.

Yours faithfully

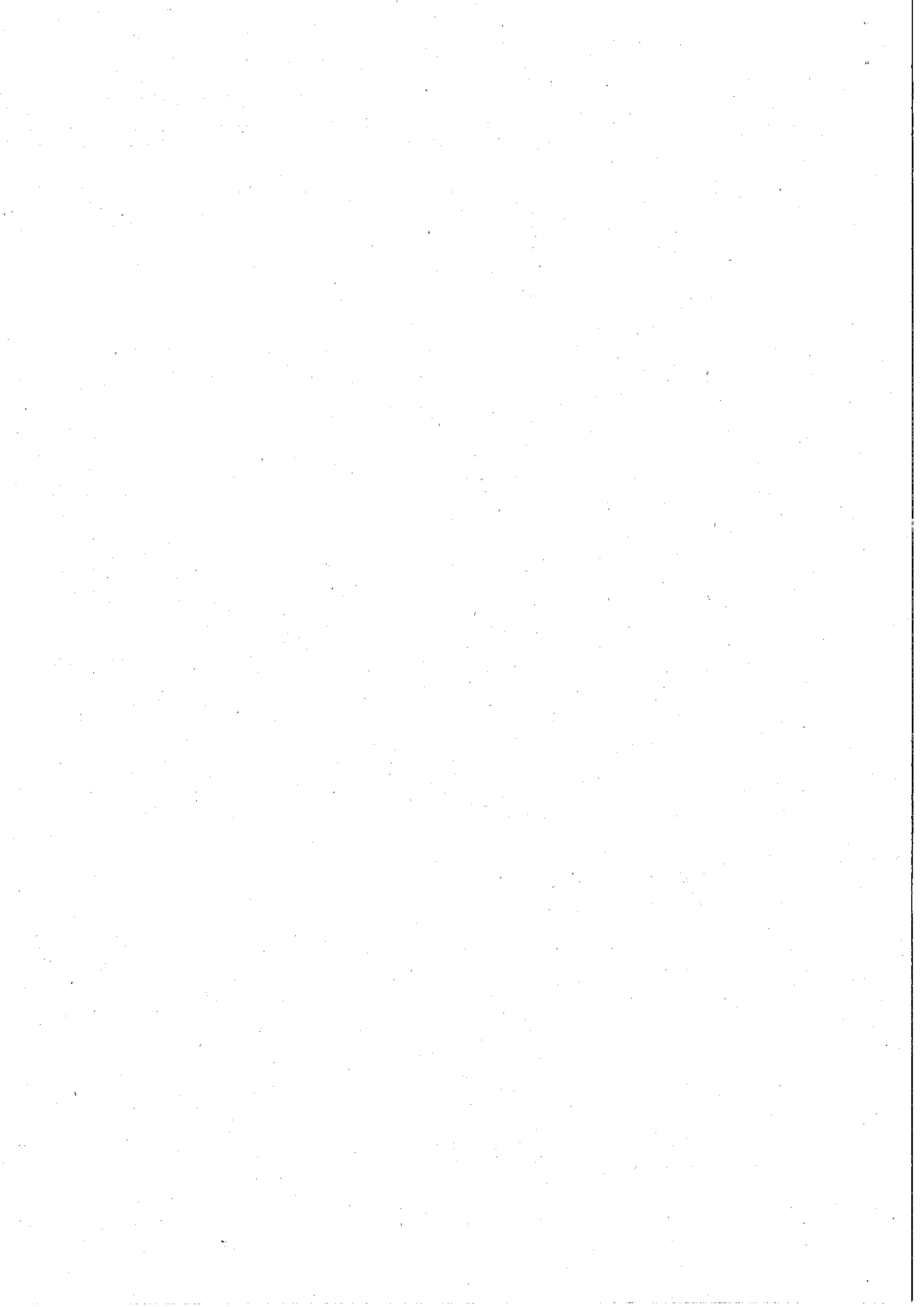


(M.K. Mishra)

Under Secretary (MIDH)

Ph. No. 011-23074238

Email: mrityunjaya.m@nic.in



Annex to letter No 33-25/2016-MIDH (AAP)
dt 13/02/2017

5484.00

| Component wise details for Physical Target and Financial outlay approved for Implementation of NHM Programmes during 2016-17 Telangana | | | | | | | | | | | | | (Rs. in Lakhs) |
|--|--|---|--|------------|-------------|---------------|-----------------|------------|-------------|------------|-------------|--------|----------------|
| S. No | Activity | Maximum permissible cost | Pattern of Assistance | Phy Target | Fin. Outlay | GOI Share 60% | State Share 40% | Spill over | | Committed | | Remark | |
| | | | | | | | | Phy Target | Fin. Outlay | Phy Target | Fin. Outlay | | |
| 1 | Plantation Infrastructure and Development | 3 | 4 | | 9 | 7 | 8 | | | 10 | 13 | 16 | |
| 1 | Small Nursery (1 ha) | | | | | | | | | | | | |
| | a) Public Sector | Rs. 15 lakhs/one ha unit | 100% to public sector and in case of private sector, credit linked back-ended subsidy @ 50% of cost, subject to a maximum of Rs. 7.50 lakh/unit, as project based activity. Each nursery will produce a minimum of 25,000 numbers of mandated perennial vegetatively propagated fruit plants/free spices/plantation crops aromatic plants, per year, duly certified for its quality. | | | 0.00 | 0.00 | | | | | | |
| | b) Private Sector | Rs. 15 lakhs/one ha unit | 100% to public sector and in case of private sector, credit linked back-ended subsidy of cost, subject to a maximum of Rs. 7.50 lakh/unit, as project based activity. Each nursery will produce a minimum of 25,000 numbers of mandated perennial vegetatively propagated fruit plants/free spices/plantation crops per year, aromatic plants, duly certified for its quality. | 2 | 15.00 | 9.00 | 6.00 | | | | | | |
| | Upgrading nursery Infrastructure to meet accreditation norms (4 ha) | | | | | | | | | | | | |
| | a) Public Sector | Up to Rs. 10,00 lakh/nursery of 4 ha, on pro-rata basis | 100% of Public Sector | | | 0.00 | 0.00 | | | | | | |
| | b) Private sector | Up to Rs. 10,00 lakh/nursery of 4 ha, on pro-rata basis | 50% of cost to Private sector subject to a maximum of Rs. 5,00 lakh/nursery. | | | 0.00 | 0.00 | | | | | | |
| | Strengthening of existing Tissue Culture (TC) units | | | | | | | | | | | | |
| | a) Public Sector | Rs. 20,00 lakh | 100% of cost to public sector | | | 0.00 | 0.00 | | | | | | |
| | b) Private sector | Rs. 20,00 lakh | 50% of cost to private sector | | | 0.00 | 0.00 | | | | | | |
| | Setting up of new TC Units. | | | | | | | | | | | | |
| | a) Public Sector | Rs. 250,00 lakh | 100% of cost to public sector | | | 0.00 | 0.00 | | | | | | |
| | b) Private sector | Rs. 250,00 lakh | 40% of cost to private sector | 1 | 100.00 | 60.00 | 40.00 | | | 1 | 100.00 | | |
| | Seed Infrastructure | | | | | | | | | | | | |
| | a) Public sector | Rs. 200,00 lakh | 100% of cost | | | 0.00 | 0.00 | | | | | | |
| | b) Private sector | Rs. 200,00 lakh | 50% of cost | | | 0.00 | 0.00 | | | | | | |
| | Sub-total Planting material | | | 3.00 | 115.00 | 69.00 | 46.00 | | | 2 | 200.00 | | |
| 2 | Establishment of new gardens / Area Expansion | | | | | | | | | | | | |
| | Fruit crops other than cost intensive crops using normal spacing (for a maximum of 2000 plants per ha) | | | | | | | | | | | | |
| | Fruits - Perennials | | | | | | | | | | | | |
| | (a) Cost intensive crops | | | | | | | | | | | | |
| | v) Banana (TC) | | | | | | | | | | | | |
| | a) Integrated package with drip irrigation. | Rs. 3,00 lakh/ha | Maximum of Rs. 1.20 lakh/ha (40 % of cost) for meeting the expenditure on planting material and cost of material for drip system, INM/PPM etc., in 2 installments (75:25). | | | 0.00 | 0.00 | | | | | | |

Sub WP

| | | | | | | | | | | | |
|---|-------------------|--|--|----------------|--|--|--|---------------|---------------|---------------|--------------|
| b) Without integration (1.8 m x 1.8 m) | Rs. 1.25 lakh/ha. | Max. of Rs. 0.50 lakh per ha. (40% of cost) for meeting the expenditure on planting material and cost of INM/IPM in 2 installments (75:25). For (a) and (b) above, in the case of TSP areas, Andaman & Nicobar and Lakshadweep Islands, assistance will be @ 50% of cost in 2 installments (75:25). | | | | | | 0.00 | 0.00 | 122 | 37.54 |
| Sub total | | | | | | | | 0.00 | 0.00 | 122.14 | 37.54 |
| Maintenance without integration | | | | | | | | | | | |
| 1st Year (Banana 1.8m x 1.8m) | | | | 1065 | | | | 109.16 | 43.66 | | |
| Sub total maintenance | | | | 1065.36 | | | | 109.16 | 43.66 | 0.00 | 0.00 |
| vii) Papaya | | | | | | | | | | | |
| a) Integrated package with drip irrigation. | Rs. 2.00 lakh/ha. | Maximum of Rs. 0.80 lakh/ha (40% of the cost) for meeting expenditure on planting material, drip irrigation and cost of material for INM/IPM, in 2 installments (75:25). | | | | | | 0.00 | 0.00 | | |
| b) Without integration (1.8m x 1.8m) | Rs. 60,000/ha | Maximum of Rs. 0.30 lakh/ha (50 % of cost) for meeting the expenditure on planting material and cost of INM/IPM in 2 installments (75:25). For (a) and (b) above, in the case of NE and Himalayan States, TSP areas, Andaman & Nicobar and Lakshadweep Islands, assistance will be @ 50% of cost in 2 installments (75:25). | | | | | | 0.00 | 0.00 | 34.77 | 8.04 |
| Sub total | | | | 0.00 | | | | 0.00 | 0.00 | 34.77 | 8.04 |
| Maintenance without integration | | | | | | | | | | | |
| 1st Year Papaya (1.8x1.8m) | | | | 755 | | | | 58.22 | 23.29 | | |
| Sub total maintenance | | | | 755.36 | | | | 58.22 | 23.29 | 0.00 | 0.00 |
| ix) High density planting (mango, guava, litchi, pomegranate, apple, citrus etc). | | | | | | | | | | | |
| a) Integrated package with drip irrigation | Rs. 1.50 lakh/ha | Maximum of Rs. 0.60 lakh per ha. (40% of cost) for meeting the expenditure on planting material, cost of drip system, INM/IPM, canopy management etc., in 3 installments of 60:20:20 subject to survival rate of 75% in 2nd year and 90% in 3rd year. | | | | | | 0.00 | 0.00 | | |
| b) Without integration (includes mango, guava and pomegranate) | Rs. 1.00 lakh/ha. | Maximum of Rs. 0.40 lakh/ha (40% of the cost) for meeting the expenditure on planting material and cost of INM/IPM in 3 installments (60:20:20). For (a) and (b) above, in the case of TSP areas, Andaman & Nicobar and Lakshadweep Islands, assistance will be @ 50% of cost in 3 installments of 60:20:20 subject to survival rate of 75% in 2nd year and 90% in 3rd year) | | | | | | 0.00 | 0.00 | | |
| Mango (5mx5m) | do | do | | 1074 | | | | 105.47 | 42.19 | 79.34 | 7.79 |
| Guava (3mx3m) | do | do | | 314.91 | | | | 55.41 | 33.24 | 17.45 | 3.07 |
| Sweet Orange (6mx6m) | | | | 593 | | | | 56.93 | 34.16 | 15.20 | 1.46 |
| Acid lime (6mx6m) | | | | 545 | | | | 52.19 | 31.31 | 22.85 | 2.19 |
| Pomegranate (5mx3m) | | | | 269 | | | | 42.37 | 25.42 | 14 | 2.26 |
| Apple Ber (5mx5m) | | | | 354 | | | | 29.53 | 17.72 | 10 | 0.87 |
| Fig (2.5mx2.5m) | | | | 22 | | | | 4.30 | 2.58 | 2 | 0.32 |
| Custard Apple (2.5x2.5m) | | | | 91 | | | | 21.80 | 13.08 | | |
| Sub total | | | | 3262 | | | | 367.99 | 147.20 | 160.94 | 17.96 |

Sub total

| Maintenance without integration | | | | | | | | | |
|---|------------------|---------|--------|-------|-------|------|------|------|------|
| 1st Year | | | | | | | | | |
| Mango (5mx5m) | do | | | | | | | | |
| Mango (2.5x2.5m)(3x3m) | do | 877 | 28.76 | 0.00 | 0.00 | | | | |
| Guava (3mx3m) | do | 7 | 0.61 | 17.26 | 11.50 | | | | |
| Guava (2x1m) | do | 148 | 8.68 | 0.37 | 0.24 | | | | |
| Sweet Orange (6mx6m) | | 2 | 0.32 | 5.21 | 3.47 | | | | |
| Acid lime (6mx6m) | | 803 | 25.69 | 0.19 | 0.13 | | | | |
| Pomegranate (5mx3m) | | 557 | 17.84 | 15.41 | 10.28 | | | | |
| Ber (5mx5m) | | 331 | 17.64 | 10.70 | 7.14 | | | | |
| Fig (2.5mx2.5m) | | 11 | 0.31 | 10.58 | 7.05 | | | | |
| Custard Apple (2.5x2.5m) | | 25 | 0.31 | 0.18 | 0.12 | | | | |
| 2nd Year | | 5 | 0.42 | 1.67 | 0.67 | | | | |
| Mango (5mx5m) | do | | 0.00 | 0.25 | 0.17 | | | | |
| Guava (3mx3m) | do | 508 | 16.65 | 0.00 | 0.00 | | | | |
| Sweet Orange (6mx6m) | do | 45 | 9.99 | 1.58 | 6.66 | | | | |
| Acid lime (6mx6m) | | 125 | 3.99 | 1.88 | 1.05 | | | | |
| Pomegranate (5mx3m) | | 103 | 3.29 | 2.39 | 1.59 | | | | |
| Sub total Maintenance | | 201 | 10.70 | 1.97 | 1.32 | | | | |
| Vegetable (For maximum area of 2 ha per beneficiary) | | 3746.00 | 139.18 | 6.42 | 4.28 | | | | |
| Hybrid | Rs. 50,000/ha | 672 | 134.44 | 83.51 | 55.67 | 0.00 | 0.00 | 0.00 | 0.00 |
| Flowers (For a maximum of 2 ha per beneficiary) | | 672.20 | 134.44 | 80.66 | 53.78 | 0.00 | 0.00 | 0.00 | 0.00 |
| 3 | | | | | | | | | |
| Barbilous flowers | | | | | | | | | |
| Small & Marginal Farmers | Rs. 1.50 lakh/ha | 25.40 | 15.24 | 9.14 | 6.10 | | | | |
| Other farmers | do | | | 0.00 | 0.00 | | | | |
| Loose Flowers | | | | | | | | | |
| Small & Marginal Farmers | Rs. 40,000/ha | 434.7 | 69.55 | 41.73 | 27.82 | | | | 3.0 |
| Other farmers | do | | | 0.00 | 0.00 | | | | 0.48 |
| Sub-total flowers | | 460.10 | 84.79 | 50.88 | 33.92 | 0.00 | 0.00 | 0.00 | 0.48 |
| Plantation crops (For a maximum area of 4 ha per beneficiary) | | | | | | | | | |
| Cocoa | | | | | | | | | |
| b) Without integration | Rs. 50,000/ha | 80 | 6.24 | 3.12 | 3.12 | | | | |
| Sub-total | | 80.80 | 6.24 | 3.12 | 3.12 | 0.00 | 0.00 | 0.00 | 0.00 |
| Cashew | Rs. 40,000/ha | | | 0.00 | 0.00 | | | | |
| Sub-total | | | | | | | | | |

Rs. 0.20 lakh per ha (40% of cost) for meeting the expenditure on planting material and cost of material for INMIPM in 3 installments of 60:20:20 subject to survival rate of 75% in second year and 90% in third year for a maximum area of 4 ha per beneficiary.
 For (a) and (b) above, in the case of NE and Himalayan States, TSP areas, Andaman & Nicobar and Lakshadweep Islands assistance will be @ 50% of cost in 3 installments.

Maximum of Rs. 20,000/- per ha (50% of cost for meeting the expenditure on planting material and cost of material for INMIPM etc) in 3 installments of 60:20:20 subject to survival rate of 75% in second year and 90% in third year for a maximum area of 4 ha.

ms/wp

| | | | | | | | | | | | | | |
|---|---------------|--|----|---------|--------|--------|--------|--------|--------|-------|------|------|-------|
| Cocoa | Rs. 40,000/ha | Maximum of Rs. 20,000/- per ha (50% of cost for meeting the expenditure on planting material and cost of material for INM/IPM etc) in 3 installments of 60:20:20 subject to survival rate of 75% in second year and 90% in third year for a maximum area of 4 ha | | | | 0.00 | 0.00 | | | | | | |
| Cocoa Inter Crop in Arecanut Gardens. | Rs. 40,000/ha | Maximum of Rs. 20,000/- per ha (50% of cost for meeting the expenditure on planting material and cost of material for INM/IPM etc) in 3 installments of 60:20:20 subject to survival rate of 75% in second year and 90% in third year for a maximum area of 4 ha | | | | 0.00 | 0.00 | | | | | | |
| Cashew | | Sub-total Maintenance | do | | | 0.00 | 0.00 | | | | | | |
| Cocoa | | | do | | | 0.00 | 0.00 | | | | | | |
| Sub-total Maintenance | | | | 30.0 | | 0.78 | 0.47 | 0.31 | | | | | |
| Grand Total Area Expansion | | | | 4474.09 | | 593.47 | 355.46 | 238.01 | 0.00 | 0.00 | 0.00 | 0.00 | 64.03 |
| Grand Total Area Expansion maintenance | | | | 5596.72 | | 307.34 | 184.40 | 122.94 | 0.00 | 0.00 | 0.00 | 0.00 | 0.00 |
| Creation of Water resources | | | | | | | | | | | | | |
| Community tanks | | | | | | | | | | | | | |
| i) Community tanks/on farm ponds/on farm water reservoirs with use of | | | | | | | | | | | | | |
| Community tanks/on farm ponds/on farm water reservoirs with use of plastic/RCC | | | | | | | | | | | | | |
| Plain areas | | Rs. 20,00 lakh in plain areas | | 2 | 40.0 | 24.00 | 16.00 | | | | | | |
| Hilly areas. | | Rs. 25 lakh/ unit for Hilly areas. | | | | 0.00 | 0.00 | | | | | | |
| ii) Water harvesting system for individuals- for storage of water in 20mx20mx3m | | | | | | | | | | | | | |
| Plain areas | | Rs. 1.50 lakh/unit in plain areas and | | 365.00 | 273.75 | 164.25 | 109.50 | 205.00 | 153.75 | | | | |
| Hilly areas. | | Rs. 1.80 lakh/unit in hilly areas | | | | 0.00 | 0.00 | | | | | | |
| Sub-total | | | | 367.00 | 313.75 | 186.25 | 125.50 | 205.00 | 153.75 | 0.00 | 0.00 | 0.00 | 0.00 |
| 5 | | | | | | | | | | | | | |
| (b) Naturally ventilated system | | | | | | | | | | | | | |
| (i) Tubular structure | | Rs. 1060/Sq.m (up to 500 Sq. m) | | 3.00 | 159.00 | 95.40 | 63.60 | | | | | | |
| (i) Tubular structure | | Rs. 844/Sq. m (>2080 Sq. m up to 4000 Sq. m) | | 10.74 | 453.20 | 271.92 | 181.28 | | 0.40 | 16.88 | | | |
| c) Plastic Mulching | | | | | | | | | | | | | |
| Plastic Mulching | | Rs. 32,000/ha | | 2000.00 | 320.00 | 192.00 | 128.00 | | 6.84 | 1.09 | | | |
| Plastic Mulching | | Rs. 36,800/ha for hilly areas | | | 0.00 | 0.00 | 0.00 | | | | | | |
| d) Shade Net House | | | | | | | | | | | | | |
| i) Tubular structure | | Rs. 710/Sq.m | | 3.85 | 136.68 | 82.01 | 54.67 | | 1.20 | 39.40 | | | |
| ii) Bamboo structure | | Rs. 414/Sq. m for hilly areas | | | 0.00 | 0.00 | 0.00 | | 0.40 | 8.30 | | | |
| f) Cost of planting material & cultivation of high value vegetables grown in poly house | | Rs. 140/Sq. m | | 5.10 | 35.70 | 21.42 | 14.28 | | 0.60 | 4.21 | | | |
| g) Cost of planting material & cultivation of Camarot & Geibera under poly house/shade net house. | | Rs. 610/Sq.m | | 6.00 | 183.00 | 109.80 | 73.20 | | 3.30 | 74.07 | | | |

Subshix

| | | | | | | | | | | | | | | |
|---|---------------------|---|-----|-------|------|------|-----|-------|--|--|--|--|--|--|
| (iv) Horticulture Machinery | 2.50 lakh per unit | Subject to a maximum of Rs. 1.00 lakh/unit for general category farmers, and in the case of SC, ST, Small & Marginal farmers, women farmers and beneficiaries in NE states, subject of a maximum of Rs. 1.25 lakh/unit. | | | | | | | | | | | | |
| 1) General | -do- | -do- | 21 | 5.88 | 3.53 | 2.35 | 2 | 0.56 | | | | | | |
| 2) SF/MF | -do- | -do- | 43 | 15.05 | 9.03 | 6.02 | 19 | 6.65 | | | | | | |
| 3) SC & ST | -do- | -do- | 29 | 10.15 | 6.09 | 4.06 | | | | | | | | |
| (v) PP Equipment | | | | | | | | | | | | | | |
| Manual Sprayer (Knapack/foot operated sprayer) | | | | | | | | | | | | | | |
| a) General | 0.012 lakh per unit | Subject to a maximum of Rs.0.005 lakh/unit for general category farmers, and in the case of SC, ST, Small & Marginal farmers, women farmers and beneficiaries in NE states, subject of a maximum of Rs. 0.006 lakh/unit. | | | 0.00 | 0.00 | | | | | | | | |
| b) SC/ST etc | 0.012 lakh per unit | Subject to a maximum of Rs.0.005 lakh/unit for general category farmers, and in the case of SC, ST, Small & Marginal farmers, women farmers and beneficiaries in NE states, subject of a maximum of Rs. 0.006 lakh/unit. | 76 | | 0.00 | 0.00 | | 0.46 | | | | | | |
| Power sprayer/power operated Taiwan sprayer (8-12 lts Capacity) | | | | | | | | | | | | | | |
| a) General | 0.062 lakh per unit | Subject to a maximum of Rs. 0.025 lakh/unit for general category farmers, and in the case of SC, ST, Small & Marginal farmers, women farmers and beneficiaries in NE states, subject of a maximum of Rs. 0.031 lakh/unit. | | | 0.00 | 0.00 | 8 | 0.18 | | | | | | |
| b) SC/ST etc | 0.062 lakh per unit | Subject to a maximum of Rs. 0.025 lakh/unit for general category farmers, and in the case of SC, ST, Small & Marginal farmers, women farmers and beneficiaries in NE states, subject of a maximum of Rs. 0.031 lakh/unit. | | | 0.00 | 0.00 | 1 | 0.02 | | | | | | |
| Power sprayer/power operated Taiwan sprayer (16 lts Capacity) | | | | | | | | | | | | | | |
| a) General | 0.20 lakh per unit | Subject to a maximum of Rs.0.08 lakh/unit for general category farmers, and in the case of SC, ST, Small & Marginal farmers, women farmers and beneficiaries in NE states, subject of a maximum of Rs. 0.10 lakh/unit. | | | 0.00 | 0.00 | 179 | 12.96 | | | | | | |
| b) SC/ST etc | 0.20 lakh per unit | Subject to a maximum of Rs.0.08 lakh/unit for general category farmers, and in the case of SC, ST, Small & Marginal farmers, women farmers and beneficiaries in NE states, subject of a maximum of Rs. 0.10 lakh/unit. | 444 | | 0.00 | 0.00 | | 33.32 | | | | | | |
| Tractor Mounted /operated sprayer (Below 20HP) | | | | | | | | | | | | | | |
| a) General | 0.20 lakh per unit | Subject to a maximum of Rs. 0.08 lakh/unit for general category farmers, and in the case of SC, ST, Small & Marginal farmers, women farmers and beneficiaries in NE states, subject of a maximum of Rs. 0.10 lakh/unit. | 15 | 1.20 | 0.72 | 0.48 | | | | | | | | |

Handwritten signature

| | | | | | | | | | | | | | |
|----|--|---|---|----------|--------|--------|-------|------|------|--------|-------|----|------|
| | b) SC/ ST etc | 0.20 lakh per unit | Subject to a maximum of Rs. 0.08 lakh/unit for general category farmers, and in the case of SC, ST, Small & Marginal farmers, women farmers and beneficiaries in NE states, subject of a maximum of Rs. 0.10 lakh/unit. | 50 | 5.00 | 3.00 | 2.00 | | | | | 21 | 2.07 |
| | Tractor Mounted /operated sprayer (Above 35HP) | | | | | | | | | | | | |
| | a) General | 1.26 lakh per unit | 40% of cost, subject to a maximum of Rs. 0.50 lakh/unit for general category farmers, and in the case of SC, ST, Small & Marginal farmers, women farmers and beneficiaries in NE states, 50% of cost, subject to a maximum of Rs. 0.63 lakh per unit. | 2 | 1.00 | 0.60 | 0.40 | | | | | | |
| | b) SC/ ST etc | 1.26 lakh per unit | 40% of cost, subject to a maximum of Rs. 0.50 lakh/unit for general category farmers, and in the case of SC, ST, Small & Marginal farmers, women farmers and beneficiaries in NE states, 50% of cost, subject to a maximum of Rs. 0.63 lakh per unit. | 17 | 10.71 | 6.43 | 4.28 | | | | | 2 | 0.36 |
| | Sub-total | Rs. 25.00 lakh | 75 % of cost in farmers' field and 100% of cost in farms belonging to Public Sector, SAUs etc. No change | 811 | 211.80 | 127.08 | 84.72 | 0.00 | 0.00 | 882.00 | 99.18 | | |
| | Technology Dissemination through demonstration/ Front Line Demonstration (FLD) | | | | | | | | | | | | |
| | Turmeric (each unit of 1 acre) | | | 199 | 75.75 | 45.45 | 30.30 | | | | | | |
| | Ultra high density mango (each unit of 1 ha) | | | 18 | 43.00 | 25.80 | 17.20 | | | | | | |
| | Meadow orchard in guava (each unit of 1 acre) | | | 12 | 19.84 | 11.90 | 7.94 | | | | | | |
| | New varieties in custard apple (each unit of 1 ha) | | | 5 | 14.31 | 8.59 | 5.72 | | | | | | |
| | TOTAL FLD | | | 234 | 152.90 | 91.74 | 61.16 | 0.00 | 0.00 | 0.00 | 0.00 | | 0.00 |
| 10 | Human Resource Development (HRD) | | | | | | | | | | | | |
| | Training of farmers | | | | | | | | | | | | |
| | Within the State | Rs. 1000/day per farmer including transport | 100% of the cost. | 10000 | 100.00 | 60.00 | 40.00 | | | | | | |
| | Outside the state | Project based as per actual | 100% of the cost. | | | 0.00 | 0.00 | | | | | | |
| | Outside the State | Project based as per actual | 100% of the cost. | 920 | 55.20 | 33.12 | 22.08 | | | | | | |
| | Outside India | Rs. 4.00 lakh / participant | Project Based, 100% of air/rail travel cost. | | | 0.00 | 0.00 | | | | | | |
| | Within the State | | | | | 0.00 | 0.00 | | | | | | |
| | Training / study tour of technical staff/ field functionaries | | | | | | | | | | | | |
| | Within the State | Rs. 300/day per participant plus TA/DA, as admissible | 100% of the cost. | 365 | 1.18 | 0.71 | 0.47 | | | | | | |
| | Study tour to progressive States/ units (group of minimum 5 participants) | Rs. 800/day per participant plus TA/DA, as admissible | 100% of the cost. | 300 | 12.00 | 7.20 | 4.80 | | | | | | |
| | Outside India | Rs. 6.00 lakh / participant | 100% of the cost on actual basis. | 2 | 12.00 | 7.20 | 4.80 | | | | | | |
| | Sub-total | | | 11587.00 | 180.38 | 108.23 | 72.15 | 0.00 | 0.00 | 0.00 | 0.00 | | 0.00 |
| 11 | INTEGRATED POST HARVEST MANAGEMENT | | | | | | | | | | | | |

Subs V/P

| Pack house / On farm collection & storage unit | Rs. 4.00 lakh/unit with size of 9Mx6M | 50% of the capital cost. | 81 | 162.00 | 97.20 | 64.80 | 236 | 472.00 | includes pre-fabricated pack houses | |
|--|--|---|----|---------|--------|--------|-----|--------|-------------------------------------|--|
| Integrated pack house with facilities for conveyer belt, sorting, grading units, washing, drying and weighing. | Rs. 50.00 lakh per unit with size of 9Mx18M | Credit linked back-ended subsidy @ 35% of the cost of project in general areas and 50% of cost in case Hilly & Scheduled areas, per beneficiary. | | | | | | | | |
| a) General Area | Rs. 50.00 lakh per unit with size of 9Mx18M | Credit linked back-ended subsidy @ 35% of the cost of project in general areas and 50% of cost in case Hilly & Scheduled areas, per beneficiary. | 1 | 17.50 | 10.50 | 7.00 | | | | |
| b) Hilly Area | Rs. 50.00 lakh per unit with size of 9Mx18M | Credit linked back-ended subsidy @ 35% of the cost of project in general areas and 50% of cost in case Hilly & Scheduled areas, per beneficiary. | | | 0.00 | 0.00 | | | | |
| Pre-cooling unit | Rs. 25.00 lakh / unit with capacity of 6MT. | Credit linked back-ended subsidy @ 35% of the cost of project in general areas and 50% of cost in case Hilly & Scheduled areas, per beneficiary. | | | 0.00 | 0.00 | | | | |
| Cold room (staging) | Rs. 15.00 lakh/ unit of 30 MT capacity | Credit linked back-ended subsidy @ 35% of the cost of project in general areas and 50% of cost in case Hilly & Scheduled areas, per beneficiary. | | | 0.00 | 0.00 | | | | |
| Cold room (staging) (Hilly areas) | Rs. 15.00 lakh/ unit of 30 MT capacity | Credit linked back-ended subsidy @ 35% of the cost of project in general areas and 50% of cost in case Hilly & Scheduled areas, per beneficiary. | 7 | 36.75 | 22.05 | 14.70 | | | | |
| Cold Storage (Construction, Expansion and Modernisation) | | | | | | | | | | |
| i) Cold storage units Type 1 - basic mezzanine structure with large chamber (of >250 MT) type | | | | | | | | | | |
| a) General Area | Rs. 8,000/MT, (max 5,000 MT capacity) | Credit linked back-ended subsidy @ 35% of the cost of project in general areas and 50% of cost in case Hilly & Scheduled areas, per beneficiary. | 8 | 1040.00 | 624.00 | 416.00 | | 140.00 | 226.19 | |
| b) Hilly Area | Rs. 8,000/MT, (max 5,000 MT capacity) | Credit linked back-ended subsidy @ 35% of the cost of project in general areas and 50% of cost in case Hilly & Scheduled areas, per beneficiary. | | | | | | | | |
| ii) Cold Storage Unit Type 2 - PEB structure for multiple temperature and product use, more than | | | | | | | | | | |
| a) General Area | Rs. 10,000/MT, (max 5,000 MT capacity) | Credit linked back-ended subsidy @ 35% of the cost of project in general areas and 50% of cost in case Hilly & Scheduled areas, per beneficiary. | 1 | 175.00 | 105.00 | 70.00 | | | | |
| b) Hilly Area | Rs. 10,000/MT, (max 5,000 MT capacity) | Credit linked back-ended subsidy @ 35% of the cost of project in general areas and 50% of cost in case Hilly & Scheduled areas, per beneficiary. | | | 0.00 | 0.00 | | | | |
| Cashew processing units | | | | | | | | | | |
| Refer vans/ containers (general areas) | | | | | | | | | | |
| a) General Area | Rs. 25.00 lakh for 9 MT (NHM & H/MNEH), and prorata basis for lesser capacity, but not below 4 MT. | Credit linked back-ended subsidy @ 35% of the cost of project in general areas and 50% of cost in case of Hilly & Scheduled areas, per beneficiary. | | | 0.00 | 0.00 | | | | |
| b) Hilly Area | Rs. 25.00 lakh for 9 MT (NHM & H/MNEH), and prorata basis for lesser capacity, but not below 4 MT. | Credit linked back-ended subsidy @ 35% of the cost of project in general areas and 50% of cost in case of Hilly & Scheduled areas, per beneficiary. | | | 0.00 | 0.00 | | | | |
| Ripening chamber project in general areas | Rs. 1.00 lakh/MT. | -do- | 11 | 385.00 | 231.00 | 154.00 | | | 44.54 | |

Handwritten signature

| | | | | | | | | | | | | | | | | | | |
|----|--|--------------------------|---|------|--------|---------|---------|--------|--------|--------|------|--------|--|--|--|--|--|--|
| | Ripening chamber project in Hilly areas | Rs. 1.00 lakh/MT. | | -do- | | | | 0.00 | 0.00 | | | | | | | | | |
| | Sub-total | | | | 109.00 | 1816.25 | 1089.75 | 726.50 | 236.00 | 612.00 | 0.00 | 270.73 | | | | | | |
| 12 | ESTABLISHMENT OF MARKETING INFRASTRUCTURE FOR HORTICULTURAL | | | | | | | | | | | | | | | | | |
| | Terminal markets | Rs. 150.00 crore/project | 25% to 40% (limited to Rs.50.00 crore) as Public-Private Partnership mode through competitive bidding, in accordance with operational guidelines issued separately. | | | | | 0.00 | 0.00 | | | | | | | | | |
| | Wholesale markets | | | | | | | | | | | | | | | | | |
| | a) General Area | Rs.100.00 crore/project | Credit linked back-ended subsidy @ 25% of the capital cost of project in general areas and 33.33% in case of Hilly & Scheduled areas for individual entrepreneurs. | | | | | 0.00 | 0.00 | | | | | | | | | |
| | b) Hilly Area | Rs.100.00 crore/project | Credit linked back-ended subsidy @ 25% of the capital cost of project in general areas and 33.33% in case of Hilly & Scheduled areas for individual entrepreneurs. | | | | | 0.00 | 0.00 | | | | | | | | | |
| | Rural Markets/ Apni mandies/Direct markets | | | | | | | | | | | | | | | | | |
| | a) General Area | Rs. 25.00 lakh | Credit linked back-ended subsidy @ 40% of the capital cost of project in general areas and 55% in case of Hilly & Scheduled areas, per beneficiary. | | 2 | 20.00 | 12.00 | 8.00 | | | | | | | | | | |
| | b) Hilly Area | Rs. 25.00 lakh | Credit linked back-ended subsidy @ 40% of the capital cost of project in general areas and 55% in case of Hilly & Scheduled areas, per beneficiary. | | | | 0.00 | 0.00 | | | | | | | | | | |
| | Retail Markets/ outlets (environmentally controlled) | | | | | | | | | | | | | | | | | |
| | a) General Area | Rs. 15.00 lakh/unit | Credit linked back-ended subsidy @ 35% of the capital cost of project in general areas and 50% in case of Hilly & Scheduled areas, per beneficiary. | | | | | 0.00 | 0.00 | | | | | | | | | |
| | b) Hilly Area | Rs. 15.00 lakh/unit | Credit linked back-ended subsidy @ 35% of the capital cost of project in general areas and 50% in case of Hilly & Scheduled areas, per beneficiary. | | | | | 0.00 | 0.00 | | | | | | | | | |
| | Static/Mobile Vending Cart/ platform with cool chamber. | Rs. 30,000/unit | 50% of total cost. | | | | 0.00 | 0.00 | | | | | | | | | | |
| | Sub-total | | | | | | 0.00 | 0.00 | 0.00 | 0.00 | 0.00 | 0.00 | | | | | | |
| | Functional Infrastructure for: | | | | | | | | | | | | | | | | | |
| | Collection, sorting/ grading, packing units etc. | | | | | | | | | | | | | | | | | |
| | a) General Area | Rs.15.00 lakh | Credit linked back-ended subsidy @ 40% of the capital cost of project in general areas and 55 % in case of Hilly & Scheduled areas, per beneficiary. | | | | | 0.00 | 0.00 | | | | | | | | | |
| | b) Hilly Area | Rs.15.00 lakh | Credit linked back-ended subsidy @ 40% of the capital cost of project in general areas and 55 % in case of Hilly & Scheduled areas, per beneficiary. | | | | | 0.00 | 0.00 | | | | | | | | | |
| | Quality control/ analysis lab | Rs. 200.00 lakh | 100% of the total cost to public sector as credit linked back ended subsidy. | | | | | 0.00 | 0.00 | | | | | | | | | |
| | Quality control/ analysis lab | Rs. 200.00 lakh | 50% of cost to private sector as credit linked back ended subsidy. | | | | | 0.00 | 0.00 | | | | | | | | | |
| | Gravity operated rope way in hilly areas | Rs. 15.00 lakh/km | Credit linked back-ended subsidy @ 50% of capital costs in Hilly areas. | | | | | 0.00 | 0.00 | | | | | | | | | |
| | Sub-total | | | | | | | 0.00 | 0.00 | 0.00 | 0.00 | 0.00 | | | | | | |
| | Total market | | | | 2.00 | 20.00 | 12.00 | 8.00 | 8.00 | 0.00 | 0.00 | 0.00 | | | | | | |
| | SPECIAL INTERVENTIONS | | | | | | | | | | | | | | | | | |
| | Innovative Interventions (Turmeric Boiling Points) | 10% of outlay | 50% of cost, based on project proposal. | | 6 | 9.00 | 5.40 | 3.60 | | | | | | | | | | |

also see Page 9 of 10

| | Turneric: Polishing Unit | 10% of outlay | 50% of cost, based on project proposal. | 25.00 | 16.75 | 10.05 | 6.70 | | | |
|----|--|--------------------------|---|----------|---------|---------|---------|--------|---------|---------|
| 13 | Sub-total | | | 31.00 | 25.75 | 15.45 | 10.30 | 0.00 | 0.00 | 0.00 |
| | State & Districts Mission Offices and implementing agencies for administrative expenses, project, preparation, computerization, contingency etc. | Mission Management | 100% assistance. | | 274.47 | 164.68 | 109.79 | | | |
| | Institutional Strengthening, hire/purchase of vehicles, hardware/software | Project based | 100% assistance. | | | 0.00 | 0.00 | | | |
| | Seminars, conferences, workshops, exhibitions, Kisan | | | | | 0.00 | 0.00 | | | |
| | International level | Rs. 7.50 lakh per event. | 100% of cost per event of 4 days, on pro rata basis. | | | 0.00 | 0.00 | | | |
| | National level | Rs. 5.00 lakh per event. | 100% of cost per event of two days. | 2 | 10.00 | 6.00 | 4.00 | | | |
| | State level | Rs. 3.00 lakh /event | 100% assistance subject to a maximum of Rs.3.00 lakh per event of two days. | 1 | 3.00 | 1.80 | 1.20 | | | |
| | District level | Rs. 2.00 lakh /event | 100% assistance subject to a maximum of Rs.2.00 lakh per event of two days. | 5 | 10.00 | 6.00 | 4.00 | | | |
| | Information dissemination through publicity, printed literature-etc and local advertisements. | Rs. 0.40 lakh/ block | 100% of cost | 26 | 10.40 | 6.24 | 4.16 | | | |
| | Sub-total | | | 34.00 | 307.87 | 184.72 | 123.15 | 0.00 | 0.00 | 0.00 |
| | Grand Total | | | 28653.50 | 5484.00 | 3289.78 | 2194.22 | 444.00 | 1865.75 | 5291.39 |
| | | | | | | | | | | 1298.31 |

Subsided