

F. No. 33-10/2016-MIDH (AAP)
Government of India
Ministry of Agriculture & Farmers Welfare
Department of Agriculture, Cooperation & Farmers Welfare
(Horticulture Division)

Room No 434
Krishi Bhawan, New Delhi-1
Dated: 15th March, 2017

To

The Director of Horticulture & Mission Director,
State Horticulture Mission, Government of Rajasthan
Directorate of Horticulture,
Pant Krishi Bhavan, Tilak Marg, Jaipur – 302005
Fax: 0141-2227997/2227830

Subject: Proposal for inter-component changes of the targets under approved components for Rajasthan under MIDH for the year 2016-17 – reg.

Sir,

I am directed to refer to your Letter No. DH/NHM/GOI/20166-17/13070 dated 09.03.2017 on the subject cited above and to convey the approval of competent authority for inter-component changes in physical targets in Annual Action Plan (AAP) 2016-17 as under:

S. No.	Items	Targets as per AAP		Proposed Targets	
		Physical (ha)	Financial (Rs. in Lakh)	Physical (ha)	Financial (Rs. in Lakh)
1	Green House – Tubular Structure (>2080 sqm.)	48	2025.60	46	1941.20
2	Shade net House	6.5	230.75	4.8	170.40
3	Plastic Tunnel	25	750.0	26.5	795.0
4	Plastic Mulch	4050	648.0	4673.4	747.75
Total		550	22.5	860	22.5

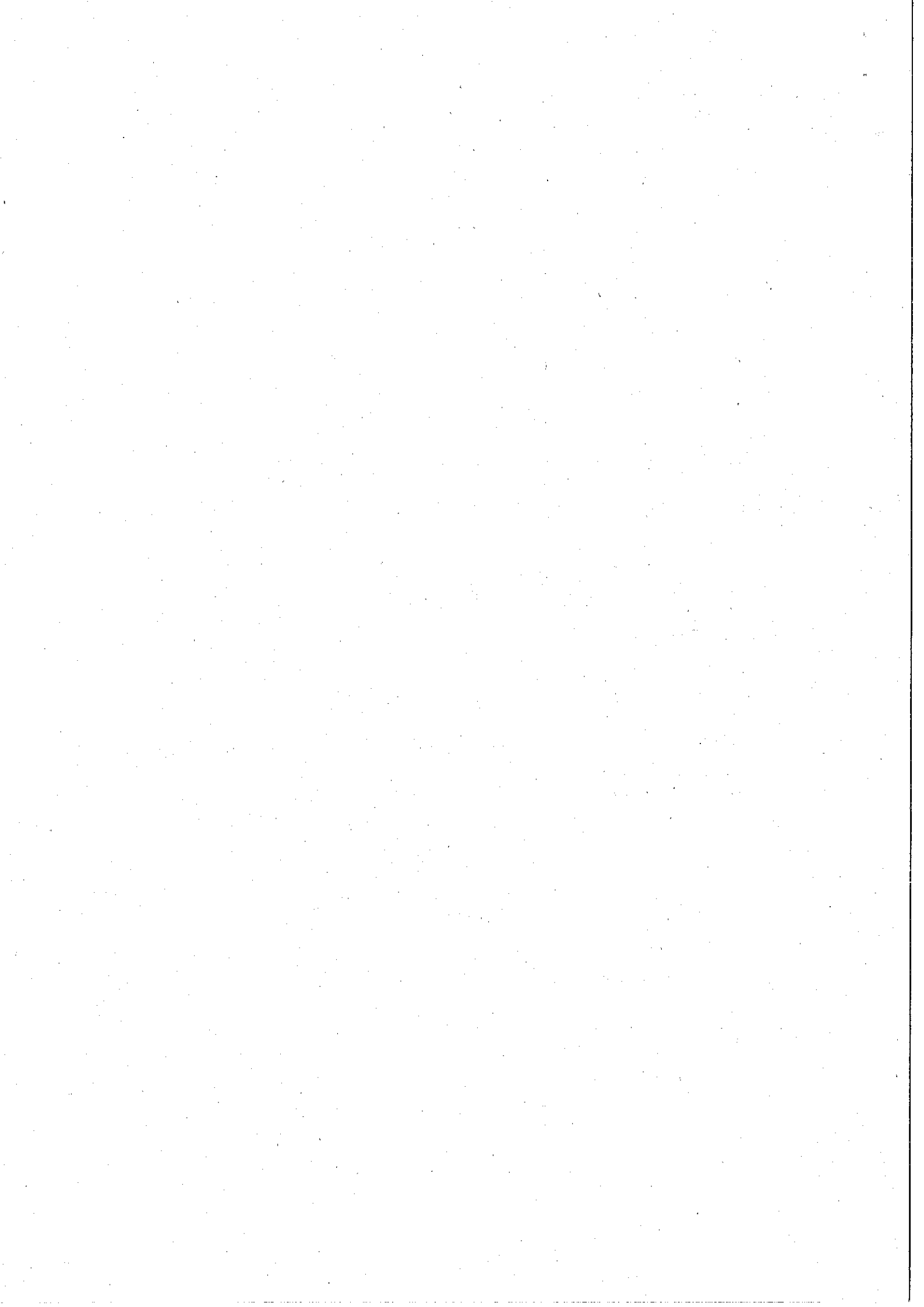
2. There is no change in the Financial Outlay.

3. It is requested that revised AAP may be implemented as per the provisions and norms of the NHM scheme. Revised AAP 2016-17 as enclosed is being uploaded on the NHM website.

Yours faithfully,



(M.K. Mishra)
Under Secretary (MIDH)
Ph. No. 011-23074238
Email: mrityunjaya.m@nic.in



Component wise details for Physical Target and Financial outlay approved for implementation of NHM Programmes during 2016-17 Rajasthan										(Rs. in Lakhs)
Action Plan 2016-17										
S. No	Activity	Maximum permissible	Pattern of Assistance	Phy Target	Financial Outlay	GOI Share 60%	State Share 40%	Physical	Financial	Remarks
Plantation Infrastructure and Development										
Production of planting material Public Sector										
	Hi-tech nursery (4ha)									
	b) Private Sector	Rs. 25 lakh/ha unit	100% to public sector limited to Rs 100 lakh/unit and in case of private sector, credit linked back-ended subsidy @ 40% of cost, subject to a maximum of Rs. 40 lakh/unit, for a maximum of 4 ha. as project based activity on prorata basis. Each nursery will produce a minimum of 50,000 numbers per hectare of mandated perennial fruit crops/ tree spices/ aromatic trees/plantation crops per year, duly certified for its quality.			0.00	0.00			
	Small Nursery (1 ha)									
	b) Private Sector	Rs. 15 lakh/one ha unit	100% to public sector and in case of private sector, credit linked back-ended subsidy of cost, subject to a maximum of Rs. 7.50 lakh/unit, as project based activity. Each nursery will produce a minimum of 25,000 numbers of mandated perennial vegetatively propagated fruit plants/tree spices/plantation crops per year, aromatic plants, duly certified for its quality.			0.00	0.00			
	Seed Infrastructure									
	a) Public sector	Rs. 200.00 lakh	100% of cost			0.00	0.00			
	b) Private sector	Rs. 200.00 lakh	50% of cost			0.00	0.00	5.00	360.0	
	Sub-total Planting material			0.00	0.00	0.00	0.00	5.00	360.00	
2	Establishment of new gardens / Area Expansion									
	Fruit crops other than cost intensive crops using normal spacing (For a maximum									
	Fruits - Perennials									
	(a) Cost intensive crops									
	Fruit crops like Grape, Kiwi, Passion fruit etc.									
	vii) Papaya									
	a) Integrated package with drip irrigation.	Rs. 2.00 lakh/ha.	Maximum of Rs. 0.80 lakh/ha (40% of the cost) for meeting expenditure on planting material, drip irrigation and cost of material for INM/IPM, in 2 installments (75:25).			0.00	0.00			
	b) Without integration	Rs. 60,000/ha	Maximum of Rs. 0.30 lakh/ha (50 % of cost) for meeting the expenditure on planting material and cost of INM/IPM in 2 installments (75:25).	5.0	1.125	0.68	0.45			
	For (a) and (b) above, in the case of NE and Himalayan States, TSP areas, Andaman & Nicobar and Lakshadweep Islands, assistance will be @ 50% of cost in 2 installments (75:25).									

Sub total		5.00	1.13	0.68	0.45	0.00	0.00
Maintenance without Integration							
1st Year		5	0.38	0.23	0.15		
Sub total maintenance		5.00	0.38	0.23	0.15	0.00	0.00
ix) High density planting (mango, guava, litchi, pomegranate, apple, citrus etc).							
a) Integrated package with drip irrigation	Rs. 1.50 lakh/ha			0.00	0.00		
Maximum of Rs. 0.60 lakh per ha. (40% of cost) for meeting the expenditure on planting material, cost of drip system, INM/IPM, canopy management etc., in 3 installments of 60:20:20 subject to survival rate of 75% in 2nd year and 90% in 3 rd year).							
b) Without Integration (includes mango, guava and pomegranate)	Rs. 1.00 lakh/ha.			0.00	0.00		
Maximum of Rs. 0.40 lakh/ha (40% of the cost) for meeting the expenditure on planting material and cost of INM/IPM in 3 installments (60:20:20). For (a) and (b) above, in the case of TSP areas, Andaman & Nicobar and Lakshadweep Islands, assistance will be @ 50% of cost in 3 installments of 60:20:20 subject to survival rate of 75% in 2nd year and 90% in 3rd year)							
Mango	do	10	2.400	1.44	0.96		
guava (3mx3m)	do	0	0.000	0.00	0.00		
Pear (3mx3m)	do		0.000	0.00	0.00		
Pomegranate (5mx2.5m)	do	70	16.800	10.08	6.72		
Sub total		80	19.200	12	8	0	0
Maintenance without Integration							
1st Year							
mango		8	0.64	0.38	0.26		
guava				0.00	0.00		
Pomegranate		42	3.36	2.02	1.34	5	0.38
2nd Year							
mango		5	0.400	0.24	0.16		
guava				0.00	0.00		
Pomegranate		25	2.000	1.20	0.80		
Sub total Maintenance		80.00	6.40	3.84	2.56	5.00	0.38
(b) Fruit crops other than cost intensive crops using normal spacing							
b) Without Integration	Rs. 60,000/ha			0.00	0.00		
Maximum of Rs. 0.30 lakh/ha (50 % of cost) for meeting the expenditure on planting material and cost of INM/IPM in 3 installments of 60:20:20.							
Mango		479	86.22	51.73	34.49		0.00
Guava		598	107.64	64.58	43.06	3	0.54
Orange		1467	264.06	158.44	105.62	890	160.11
Kinnow		125	22.50	13.50	9.00		0.00
lime		840	151.20	90.72	60.48	13	2.35
Ber		120	21.60	12.96	8.64	2	0.38
Pomegranate		371	66.78	40.07	26.71	30	5.31

		Sub total									
Maintenance without Integration											
	1st Year										
	Mango	320.00	19.20	11.52		7.68		0.00			
	Guava	400.00	24.00	14.40		9.60		0.00			
	Orange	2500.00	150.00	90.00		60.00		0.00			
	Kinnow	30.00	1.80	1.08		0.72		0.00			
	lime	500.00	30.00	18.00		12.00		0.84			
	Ber	70.00	4.20	2.52		1.68		11.00		0.66	
	Pomegranate	180.00	10.80	6.48		4.32		4.00		0.24	
	2nd Year										
	Ber (6mX6m/3m)	43.00	2.58	1.55		1.03		10.00		0.60	
	Kinnow	30.00	1.80	1.08		0.72				0.00	
	Orange	4235.00	254.00	152.40		101.60				0.00	
	Guava	161.00	9.66	5.80		3.86		2.00		0.12	
	Lime	281.00	16.86	10.12		6.74		25.00		1.50	
	Pomegranate	151.00	9.06	5.44		3.62		4.00		0.25	
	Mango	99.00	5.94	3.56		2.38					
	Sub total maintenance	9000.00	539.90	323.94		215.96		70.00		4.21	
3	Flowers (For a maximum of 2 ha per beneficiary)										
	Loose Flowers										
	Small & Marginal Farmers										
	Sub-total flowers	Rs. 40,000/ha	40% of cost								
			20.0	3.2		1.92		1.28			
			20.00	3.20		1.92		1.28		0.00	
4	Spices (For a maximum area of 4 ha per beneficiary)										
	Seed spice and Ritomatic spices	Rs.30,000/ha	Maximum of Rs. 12,000/- per ha. (40% of cost) for meeting the expenditure on planting material and cost of material for INM/IPM etc).								
	Coriander		950	52.250		31.35		20.90		10	0.55
	Cumin		1000	55.000		33.00		22.00		10.00	0.55
	Methi		500	27.500		16.50		11.00		7.00	0.39
	Fennel		20	1.100		0.66		0.44			
	Sub-total spices		2470.00	135.85		81.51		54.34		27.00	1.49
	Grand Total Area Expansion		6575.00	879.38		527.63		351.75		965.10	170.18
	Grand Total Area Expansion maintenance		9085.00	546.68		328.01		218.67		75.00	4.59
5	Rejuvenation/ replacement of senile plantation including Canopy management. Mango	Rs. 40,000/ha	50% of the total cost subject to a maximum of Rs. 20,000/ha limited to two ha per beneficiary.								
	Sub-total		500.00	100.000		60.00		40.00		202.00	40.38
	Creation of Water resources										
	Community tanks										
	Sub-total		500.00	100.00		60.00		40.00		202.00	40.38

i) Community tanks/on farm ponds/on farm water reservoirs with use of plastic/RCC lining - (10 ha. of command area, with pond size of 100m x 100m x 3m)									
Community tanks/on farm ponds/on farm water reservoirs with use of plastic/RCC lining									
Plain areas	Rs. 20.00 lakh in plain areas	100% of cost for 10 ha command	70	1400.0	840.00	560.00	38	763.48	
ii) Water harvesting system for individuals- for storage of water in 20mx20mx3m									
Plain areas	Rs. 1.50 lakh/unit in plain areas and	50% of cost. Maintenance to be ensured by the beneficiary.	15	11.25	6.75	4.50		0.00	
Sub-total			85.00	1411.250	846.75	564.50	38.00	763.48	
5	Protected cultivation								
(b) Naturally ventilated system									
(i) Tubular structure	Rs. 935/Sq.m (>500 Sq. m up to 1008 Sq. m)	50% of the cost limited to 4000 Sq.m per beneficiary.	0.50	23.38	14.03	9.35			
(i) Tubular structure	Rs. 890/Sq. m (>1008 Sq.m up to 2080 Sq. m)	50% of the cost limited to 4000 Sq.m per beneficiary.	2.50	111.25	66.75	44.50			
(i) Tubular structure	Rs. 844/Sq. m (>1008 Sq.m up to 2080 Sq. m)	50% of the cost limited to 4000 Sq.m per beneficiary.	46.00	1941.20	1164.72	776.48	22.87	965.22	
c) Plastic Mulching									
Plastic Mulching	Rs. 32,000/ha	50% of the total cost limited to 2 ha per beneficiary.	4673	747.75	448.65	299.10	816.00	130.61	
d) Shade Net House									
i) Tubular structure	Rs. 710/Sq.m	50% of cost limited to 4000 Sq.m per beneficiary.	4.80	170.40	102.24	68.16	2.25	79.88	
Plastic Tunnels	Rs. 600/Sq.m	50% of cost limited to 1000 sq. m per beneficiary.	26.5	795.00	477.00	318.00	43	129.43	
e) Anti Bird/Anti Hail Nets	Rs.35/- per Sq.m	50% of cost limited to 5000 Sq.m per beneficiary.	0.10	0.18	0.11	0.07	0.75	1.32	
f) Cost of planting material & cultivation of high value vegetables grown in poly house	Rs.140/Sq. m	50% of cost limited to 4000 Sq.m per beneficiary.	25.00	175.00	105.00	70.00			
h) Cost of planting material & cultivation of Camation & Gerbera under poly house/shade net house.	Rs. 610/Sq.m	50% of cost limited to 4000 Sq. m per beneficiary.	1.00	30.50	18.30	12.20			
i) Cost of planting material & cultivation of Rose and lilium under poly house/shade net house	Rs. 426/Sq.m	50% of cost limited to 4000 Sq. m per beneficiary.	1.60	34.08	20.45	13.63			
Sub-total protected cultivation			4781.44	4028.73	2417.24	1611.49	885.02	1306.46	
6	Promotion of Integrated Nutrient Management(INM)/ Integrated Pest Management								
Promotion of IPM	Rs. 4000/ha	30% of cost subject to a maximum of Rs 1200/ha limited to 4.00 ha/ beneficiary.	500	6.0	3.60	2.40			
Sub-total INM / IPM			500.00	6.00	3.60	2.40	0.00	0.00	
7	Adoption Organic Farming								

General category	1.00 lakh per unit	Subject to a maximum of Rs.0.40 lakh/unit for general category farmers, and in the case if SC, ST, Small & Marginal farmers, women farmers and beneficiaries in NE states, subject of a maximum of Rs. 0.50 lakh/unit.	3	1.20	0.72	0.48	
SC, ST, Small & Marginal farmers	1.00 lakh per unit	Subject to a maximum of Rs.0.40 lakh/unit for general category farmers, and in the case if SC, ST, Small & Marginal farmers, women farmers and beneficiaries in NE states, subject of a maximum of Rs. 0.50 lakh/unit.	2	1.00	0.60	0.40	
b) Power tiller (8 BHP & above)							
General category	1.50 lakh per unit	Subject to a maximum of Rs.0.60 lakh/unit for general category farmers, and in the case if SC, ST, Small & Marginal farmers, women farmers and beneficiaries in NE states, subject of a maximum of Rs. 0.75 lakh/unit.			0.00	0.00	
SC, ST, Small & Marginal farmers	1.50 lakh per unit	Subject to a maximum of Rs.0.60 lakh/unit for general category farmers, and in the case if SC, ST, Small & Marginal farmers, women farmers and beneficiaries in NE states, subject of a maximum of Rs. 0.75 lakh/unit.			0.00	0.00	
(iii) Tractor/Power-tiller (below 20 BHP) driven equipments							
a) Land Development, tillage and seed bed preparation equipments	0.30 lakh per unit	Subject to a maximum of Rs.0.12 lakh/unit for general category farmers, and in the case if SC, ST, Small & Marginal farmers, women farmers and beneficiaries in NE states, subject of a maximum of Rs. 0.15 lakh/unit.			0.00	0.00	0.00
1) General	-do-	-do-	1	0.12	0.07	0.05	
2) SF/MF	-do-	-do-	1	0.15	0.09	0.06	
3) SC & ST	-do-	-do-			0.00	0.00	0.00
b) Sowing, planting reaping and digging equipments	0.30 lakh per unit	Subject to a maximum of Rs.0.12 lakh/unit for general category farmers, and in the case if SC, ST, Small & Marginal farmers, women farmers and beneficiaries in NE states, subject of a maximum of Rs. 0.15 lakh/unit.			0.00	0.00	0.00
General category	0.30 lakh per unit	Subject to a maximum of Rs.0.12 lakh/unit for general category farmers			0.00	0.00	
SC, ST, Small & Marginal farmers	0.30 lakh per unit	SC, ST, Small & Marginal farmers, women farmers and beneficiaries in NE states, subject of a maximum of Rs. 0.15 lakh/unit.			0.00	0.00	
Tractor Mounted /operated sprayer (Below 35HP)							

Cold room (staging)	Rs. 15.00 lakh/unit of 30 MT capacity	Credit linked back-ended subsidy @ 35% of the cost of project in general areas and 50% of cost in case Hilly & Scheduled areas, per beneficiary.					0.00	0.00					
Cold Storage (Construction, Expansion and Modernisation)													
i) Cold storage units Type 1 - basic mezzanine structure with large chamber (of >250 MT) type													
a) General Area	Rs. 8,000/MT. (max 5,000 MT capacity)	(Credit linked back-ended subsidy @ 35% of the cost of project in general areas and 50% of cost in case Hilly & Scheduled areas, per beneficiary.	4	500.00	300.00	200.00			2	297.00			
Technology induction and modernization of cold chain	Rs.250 lakh	Credit linked back-ended subsidy @ 35% of the cost of project in general areas and 50% of cost in case Hilly & Scheduled areas, per beneficiary.	1	35.00	21.00	14.00							
Refer vans/ containers (general areas)													
a) General Area	Rs. 26.00 lakh for 9 MT (NHM & HMNEH), and prorata basis for lesser capacity, but not below 4 MT.	Credit linked back-ended subsidy @ 35% of the cost of project in general areas and 50% of cost in case of Hilly & Scheduled areas, per beneficiary.	1	9.10	5.46	3.64							
Ripening chamber project in general areas	Rs. 1.00 lakh/MT.	-do-	2	60.00	36.00	24.00							Total Capacity 172 MT.
Preservation unit (low cost)	Rs.2.00 lakh/unit for new unit and Rs.1.00lakh/unit for up-gradation	50% of the total cost.			0.00	0.00							
Low cost onion storage structure (25 MT)	Rs. 1.75 lakh/per unit	50% of the total cost.	350	306.19	183.71	122.48			125	109.39			
Sub-total			424.00	1057.79	634.67	423.12			146.00	444.39			
12 ESTABLISHMENT OF MARKETING INFRASTRUCTURE FOR HORTICULTURAL													
Retail Markets/ outlets (environmentally													
a) General Area	Rs. 15.00 lakh /unit	Credit linked back-ended subsidy @ 35% of the capital cost of project in general areas and 50% in case of Hilly & Scheduled areas, per beneficiary.			0.00	0.00							
Sub-total			0.00	0.00	0.00	0.00			0.00	0.00			
13 Mission Management													
State & Districts Mission Offices and implementing agencies for administrative expenses, project preparation, computerization, contingency etc.	5% of total annual expenditure on the basis of appraised needs to State Horticulture Mission (SHM) / implementing Agencies	100% assistance.		89.00	53.40	35.60							2.95
Institutional Strengthening, hire/purchase of vehicles, hardware/software	Project based	100% assistance.		6.00	3.60	2.40							

