

F. No. 33-11/2016-MIDH (AAP)
Government of India
Ministry of Agriculture & Farmers Welfare
Department of Agriculture, Cooperation & Farmers Welfare
(Horticulture Division)

Room No.-434
Krishi Bhawan, New Delhi-1
Dated: 03rd March, 2017

To

The Director of Horticulture & Mission Director,
State Horticulture Mission, Govt. of Chhattisgarh,
HOD Building, Indravati Bhawan, IInd Block,
4th Floor, New Raipur-492001 (Chhattisgarh)

Subject: Proposal for inter-component changes of the targets under approved components for Chhattisgarh under MIDH for the year 2016-17- reg.

Sir,

I am directed to refer to your letter No. SHM/2016-17/613 dated 28.02.17 on the subject mentioned above and to convey the approval of competent authority for inter-component changes in physical and financial targets in Annual Action Plan (AAP) 2016-17 as under:

Rs in Lakhs

S.NO	Activities	Unit	Phy Target			Financial Outlay			% of outlay
			Old	New	Diff	Old	New	Diff	
1	Nursery and planting Materials	No.	172.0	72.0	-100.0	499.8	487.5	-12.3	4.2
2	Est. of new gardens +Mushrooms	Ha.	8804.0	9311.0	507.0	1900.9	1941.9	41.0	16.8
3	Maintenances 1 & 2 Year	Ha.	2058.0	2058.0	0.0	215.5	215.5	0.0	1.9
4	Rejuvenation	Ha.	575.0	0.0	-575.0	115.0	0.0	-115.0	0.0
5	Creation of Water Res.	No.	290.0	290.0	0.0	795.0	795.0	0.0	6.9
6	Protected cultivation	Ha.	9067.5	13213.9	4146.4	3893.6	4747.9	854.3	41.1
7	Promotion of IPM/INM	Ha.	5000.0	5000.0	0.0	60.0	60.0	0.0	0.5
8	Adoption of Org. Farming	Ha.	11738.0	11628.0	-110.0	813.0	758.0	-55.0	6.6
10	Beekeeping	No.	5200.0	5200.0	0.0	128.0	128.0	0.0	1.1
11	Horticulture Mech.	No.	6000.0	6000.0	0.0	140.0	140.0	0.0	1.2
12	FLD	No.	2.0	1.0	-1.0	50.0	25.0	-25.0	0.2
13	HRD	No.	3962.0	3953.0	-9.0	161.3	107.3	-54.0	0.9
14	Post Harvest Mgt.	No.	605.0	493.0	-112.0	1792.2	1554.0	-238.2	13.5
15	Markets	No.	10.0	2.0	-8.0	76.3	10.5	-65.8	0.1
16	Awareness, survey etc.		30.0	8.0	-22.0	350.0	20.0	-330.0	0.2
17	Mission Management		0.0	0.0	0.0	548.5	548.5	0.0	4.8
18	Institutional Strengthening		0.0	0.0	0.0	0.0	0.0	0.0	0.0
19	TSG at State Level		0.0	0.0	0.0	0.0	0.0	0.0	0.0
	Total		53513.5	67229.9	13716.4	11539.0	11539.0	0.0	100.0
20	Committed spillover					16.8			
	Total					16.8			
	G. Total		53513.5			11555.8			

2. There is no change in the financial outlay.

3. It is requested that the revised AAP may be implemented as per the provisions and norms of the NHM scheme. Revised AAP 2016-17 as enclosed is being uploaded on the NHM website.

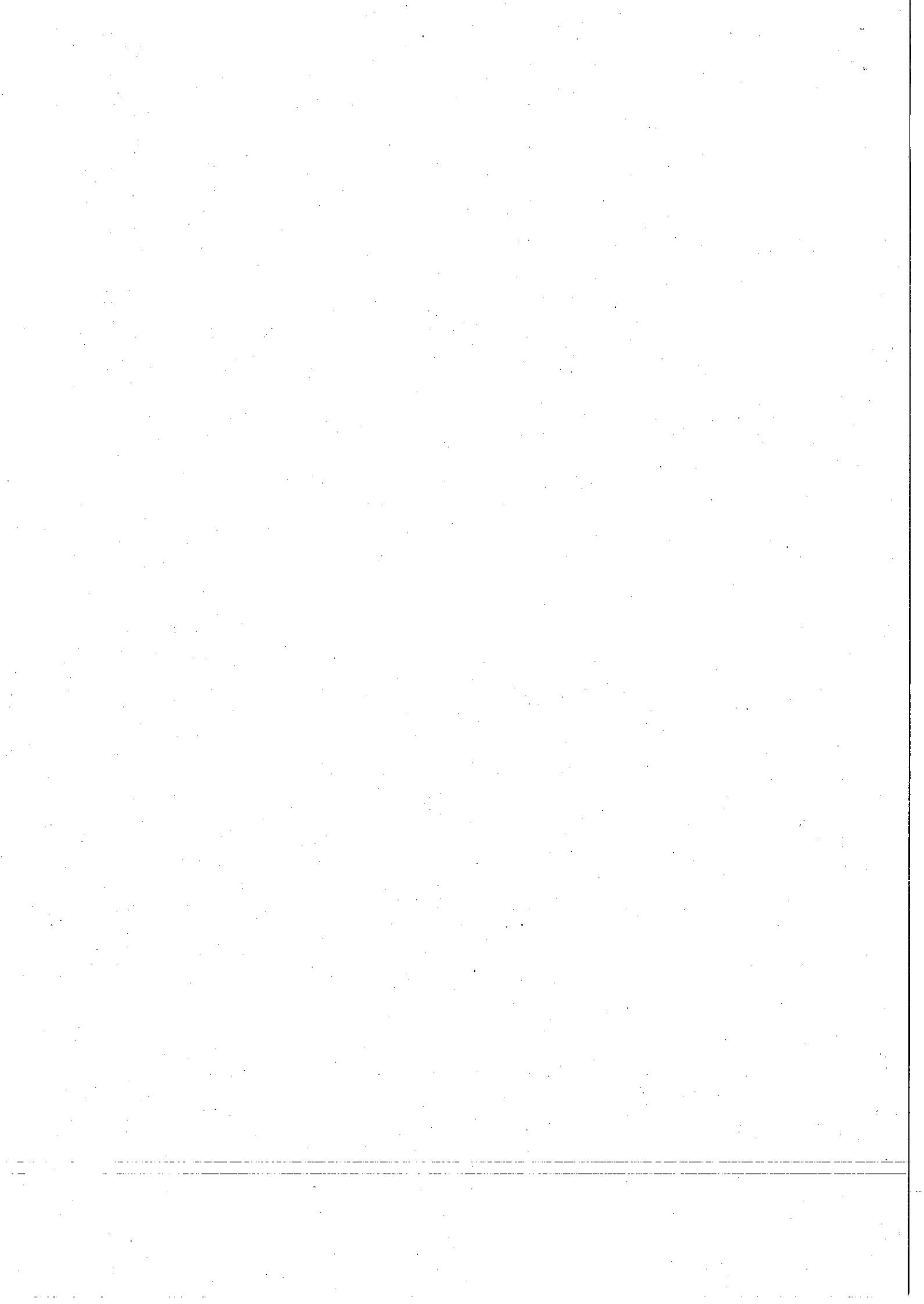
Yours faithfully



Copy to:

1. PS to JS(MIDH)
2. Tech.Dir(NIC) with a request to upload the same in nhm.nic.in/midh.gov.in

(M.K. Mishra)
Under Secretary (MIDH)
Ph. No. 011-23074238
Email: mrityunijaya.m@nic.in



Component wise details for Physical Target and Financial outlay approved for implementation of NHM Programmes during 2016-17 Chattisgarh

(Rs. In Lakhs)

S. No	Activity	Maximum permissible cost	Pattern of Assistance	Phy Target	Fin. Outlay	GOI Share 60%	State Share 40%	Spill over	Remark
I Plantation Infrastructure and Development									
Production of planting material Public Sector									
Hi-tech nursery (4ha)									
a)	Public Sector	Rs. 25.00 lakh/ha	100% to public sector limited to Rs 100 lakh/unit and in case of private sector, credit linked back-ended subsidy @ 40% of cost, subject to a maximum of Rs. 40 lakh/unit, for a maximum of 4 ha. as project based activity on prorata basis. Each nursery will produce a minimum of 50,000 numbers per hectare of mandated perennial fruit crops/ tree spices/ aromatic trees/plantation crops per year, duly certified for its quality.	2	200.00	120.00	80.00		
b)	Private Sector	Rs. 25 lakh/ha unit	100% to public sector limited to Rs 100 lakh/unit and in case of private sector, credit linked back-ended subsidy @ 40% of cost, subject to a maximum of Rs. 40 lakh/unit, for a maximum of 4 ha. as project based activity on prorata basis. Each nursery will produce a minimum of 50,000 numbers per hectare of mandated perennial fruit crops/ tree spices/ aromatic trees/plantation crops per year, duly certified for its quality.	2	80.00	48.00	32.00		
Small Nursery (1 ha)									
a)	Public Sector	Rs. 15 lakh/one ha unit	100% to public sector and in case of private sector, credit linked back-ended subsidy @ 50% of cost, subject to a maximum of Rs. 7.50 lakh/unit, as project based activity. Each nursery will produce a minimum of 25,000 numbers of mandated perennial vegetatively propagated fruit plants/tree spices/plantation crops aromatic plants, per year, duly certified for its quality.	4	60.00	36.00	24.00		
b)	Private Sector	Rs. 15 lakh/one ha unit	100% to public sector and in case of private sector, credit linked back-ended subsidy of cost, subject to a maximum of Rs. 7.50 lakh/unit, as project based activity. Each nursery will produce a minimum of 25,000 numbers of mandated perennial vegetatively propagated fruit plants/tree spices/plantation crops per year, aromatic plants, duly certified for its quality.	4	30.00	18.00	12.00		

rubisho

Upgrading nursery infrastructure to meet accreditation norms (4 ha)						
a) Public Sector	Up to Rs. 10.00 lakh/nursery of 4 ha, on prorata basis	100% of Public Sector	10	100.00	60.00	40.00
b) Private sector	Up to Rs. 10.00 lakh/nursery of 4 ha, on prorata basis	50% of cost to Private sector subject to a maximum of Rs. 5.00 lakh/nursery.			0.00	0.00
Seed production for vegetables and spices						
Open pollinated crops						
a) Public Sector	Rs. 35,000/ha	100% of cost, limited to 5 ha. Output target of seed for each crop will be fixed by the individual state.	50	17.50	10.50	7.00
b) Private sector	Rs. 35,000/ha	35% in general areas and 50% in NE & Himalayan States, Tribal Sub Plans (TSP) areas, Andaman & Nicobar & Lakshadweep Islands, limited to 5 ha. Output target of seed for each crop will be fixed by the individual state.		0.00	0.00	0.00
Sub-total Planting material			72.00	487.50	292.50	195.00
2 Establishment of new gardens / Area Expansion						
Fruit crops other than cost intensive crops using normal spacing (For a maximum)						
Fruits - Perennials						
(a) Cost intensive crops						
(i) Strawberry						
a) Integrated package with drip irrigation & mulching	Rs. 2.80 lakh/ha	Maximum of Rs. 1.12 lakh/ per ha. (40% of cost) for meeting the expenditure on planting material and cost of material for drip irrigation, mulching and INM/IPM, in one installment.			0.00	0.00
b) Without integration	Rs. 1.25 lakh/ha	Maximum of Rs. 0.50 lakh/ha (40% of cost) for meeting the expenditure on planting material and cost of INM/IPM one installment. For (a) and (b) above, in the case of TSP areas, Andaman & Nicobar and Lakshadweep Islands, assistance will be @ 50% of cost.	50	25.00	15.00	10.00
Sub total			50.00	25.00	15.00	10.00
(v) Banana (TC)						
a) Integrated package with drip irrigation.	Rs. 3.00 lakh/ha	Maximum of Rs. 1.20 lakh/ha (40 % of cost) for meeting the expenditure on planting material and cost of material for drip system, INM/IPM etc., in 2 installments (75:25).			0.00	0.00

b) Without integration	Rs. 1.25 lakh/ha.	Max. of Rs. 0.50 lakh per ha. (40% of cost) for meeting the expenditure on planting material and cost of INM/PPM in 2 installments (75:25). For (a) and (b) above, in the case of TSP areas, Andaman & Nicobar and Lakshadweep Islands, assistance will be @ 50% of cost in 2 installments (75:25).	1000	375.00	225.00	150.00		
Sub total			1000.00	375.00	225.00	150.00		
Maintenance without Integration								
1st Year			1000	125.00	75.00	50.00		
Sub total maintenance			1000	125.00	75.00	50.00		
vii) Papaya								
a) Integrated package with drip irrigation.	Rs. 2.00 lakh/ha.	Maximum of Rs. 0.80 lakh/ha (40% of the cost) for meeting expenditure on planting material, drip irrigation and cost of material for INM/PPM, in 2 installments (75:25).						
b) Without integration	Rs. 60,000/ha	Maximum of Rs. 0.30 lakh/ha (50 % of cost) for meeting the expenditure on planting material and cost of INM/PPM in 2 installments (75:25). For (a) and (b) above, in the case of NE and Himalayan States, TSP areas, Andaman & Nicobar and Lakshadweep Islands, assistance will be @ 50% of cost in 2 installments (75:25).	500.0	112.50	67.50	45.00		
Sub total				112.50	67.50	45.00		
Maintenance without Integration								
1st Year			500	37.50	22.50	15.00		
Sub total maintenance				37.50	22.50	15.00		
(b) Fruit crops other than cost intensive crops using normal spacing								
a) Integrated package with drip irrigation	Rs. 1.00 lakh/ha	Maximum of Rs. 0.40 lakh/ha. (40% of cost) for meeting the expenditure on planting material, cost of drip system, INM/PPM, canopy management etc in 3 installments of 60:20:20 subject to survival rate of 75% in 2nd year & 90% in 3rd year for perennial crops and for non perennial crops in 2 installments of 75:25						
b) Without integration	Rs. 60,000/ha	Maximum of Rs. 0.30 lakh/ha (50 % of cost) for meeting the expenditure on planting material and cost of INM/PPM in 3 installments of 60:20:20.			0.00	0.00		
Guava (3mX3m)	Rs. 73330		200	44.00	26.40	17.60		
Pear (5mX5m)	Rs. 38000		100	11.40	6.84	4.56		

Subshree Pg 3 of 10

	Pomegranate (5mx5m)	Rs. 48000		400	57.60	34.56	23.04
	Sapota (5mx5m)	Rs. 45400		400	54.46	32.68	21.78
	Litchi (7.5mx7.5m)	Rs. 35350		400	42.40	25.44	16.96
	Cherry (4mx4m)			50	7.61	4.57	3.04
	Custard Apple (2.5x2.5)			100	28.00	16.80	11.20
	Dragon fruit (4x4)			50	5.30	3.18	2.12
	Apple Ber (4x4)			100	13.13	7.88	5.25
	Sub total			1800.00	263.90	158.34	105.56
	Maintenance without Integration						
	1st Year						
	Guava (3mx3m)	Rs. 73330		300	22.00	13.20	8.80
	Pear (5mx5m)	Rs. 38000		200	7.60	4.56	3.04
	Pomegranate (5mx5m)	Rs. 48000		200	9.60	5.76	3.84
	Litchi (7.5mx7.5m)	Rs. 35350		200	7.07	4.24	2.83
	2nd Year						
	Pear (5mx5m)	Rs. 38000		24	0.91	0.55	0.36
	Pomegranate (5mx5m)	Rs. 48000		85	4.08	2.45	1.63
	Litchi (7.5mx7.5m)	Rs. 35350		49	1.73	1.04	0.69
	Sub total Maintenance			1058.00	52.99	31.80	21.20
	Vegetable (For maximum area of 2 ha per beneficiary)						
	Hybrid (Onion, Potato, Tomato etc.)	Rs. 50,000/ ha	40% of cost in general areas	2950	590.00	354.00	236.00
	Sub-total			2950.00	590.00	354.00	236.00
3	Flowers (For a maximum of 2 ha per beneficiary)						
	Cut flowers						
	Small & Marginal Farmers	Rs. 1.00 lakh/ha	40% of cost			0.00	0.00
	Other farmers	do	25% of the cost	100.0	25.00	15.00	10.00
	Bulbous flowers						
	Small & Marginal Farmers	Rs. 1.50 lakh/ha	40 % of the cost			0.00	0.00
	Other farmers	do	25% of cost	500.00	187.51	112.51	75.00
	Loose Flowers						
	Small & Marginal Farmers	Rs. 40,000/ha	40% of cost			0.00	0.00
	Other farmers	do	25% of cost	500.0	50.00	30.00	20.00
	Sub-total flowers			1100.00	262.51	157.51	105.00
4	Spices (For a maximum area of 4 ha per beneficiary)						

	Seed spice and Rhizomatic spices (includes Turmeric, Ginger, Coriander etc.)	Rs.30,000/ha	Maximum of Rs. 12,000/- per ha. (40% of cost) for meeting the expenditure on planting material and cost of material for INM/PPM etc).	2408	288.96	173.38	115.58		
	Perennial spices (black pepper)	Rs. 50,000/ha	Maximum of Rs. 20,000/- per ha (@40% of cost) for meeting the expenditure on planting material and cost of material for INM/PPM etc. For (i) and (ii) above, in the case of TSP areas, Andaman and Lakshadweep Islands, assistance will be @ 50% of cost.			0.00	0.00		
	Sub-total spices			2408.00	288.96	173.38	115.58		
	Grand Total Area Expansion			9311.00	1941.87	1165.12	776.75		
	Grand Total Area Expansion maintenance			2058.00	215.49	129.30	86.20		
	Mushrooms								
	Production unit								
	Public Sector	Rs. 20.00 lakh/ unit	100% of the cost.			0.00	0.00		
	Private Sector	Rs. 20.00 lakh/ unit	40% of cost for private sector, for meeting the expenditure on infrastructure, as credit linked back ended subsidy.	3.0	24.00	14.40	9.60		
	Sub-total mushrooms			3.00	24.00	14.40	9.60		
5	Rejuvenation/ replacement of senile plantation including Canopy management Mango	Rs. 40,000/ha	50% of the total cost subject to a maximum of Rs. 20,000/ha limited to two ha per beneficiary.		0.00	0.00	0.00		
	Sub-total			0.00	0.00	0.00	0.00		
	Creation of Water resources								
	Community tanks								
	i) Community tanks/on farm ponds/on farm water reservoirs with use of plastic/RCC								
	Plain areas	Rs. 20.00 lakh in plain areas	100% of cost for 10 ha command	30	600.0	360.00	240.00		
	Hilly areas.	Rs. 25 lakh/ unit for Hilly areas.	100% of cost for 10 ha command			0.00	0.00		
	ii) Water harvesting system for individuals- for storage of water in 20mx20mx3m								
	Plain areas	Rs. 1.50 lakh/unit in plain areas and	50% of cost. Maintenance to be ensured by the beneficiary.	260	195.0	117.00	78.00		
	Hilly areas.	Rs. 1.80 lakh/unit in hilly areas	50% of cost. Maintenance to be ensured by the beneficiary.			0.00	0.00		
	Sub-total			290.00	795.00	477.00	318.00		
5	(b) Naturally ventilated system								
	(i) Tubular structur	Rs. 1060/Sq.m (up to 500 Sq. m)	50% of the cost limited to 4000 Sqm per beneficiary.	5.0	234.9	140.91	93.94		


 Pg. 5 of 10

(i) Tubular structure	Rs. 935/Sq.m (>500 Sq. m up to 1008 Sq. m)	50% of the cost limited to 4000 Sq.m per beneficiary.				0.00	0.00
c) Plastic Mulching							
Plastic Mulching	Rs. 32,000/ha	50% of the total cost limited to 2 ha per beneficiary.	13141.0	2102.6	1261.54	841.02	
Plastic Mulching	Rs. 36,800/ha for hilly areas	50% of the total cost limited to 2 ha per beneficiary.			0.00	0.00	
d) Shade Net House							
i) Tubular structure	Rs. 710/Sq.m	50% of cost limited to 4000 Sq.m per beneficiary.	67.9	2410.5	1446.27	964.18	
Sub-total protected cultivation							
			13213.9	4747.9	2848.72	1899.14	
6 Promotion of Integrated Nutrient Management(INM)/ Integrated Pest Management							
Promotion of IPM	Rs. 4000/ha	30% of cost subject to a maximum of Rs 1200/ha limited to 4.00 ha/beneficiary.	5000	60.00	36.00	24.00	
Promotion of INM	Rs. 4000/ha	30% of cost subject to a maximum of Rs 1200/ha limited to 4.00 ha/beneficiary.			0.00	0.00	
Disease forecasting unit (PSUs)	Rs. 6.00 lakh/unit	100 % of costs.			0.00	0.00	
Sub-total INM / IPM							
			5000.00	60.00	36.00	24.00	
7 Adoption Organic Farming							
(i) Adoption of Organic Farming. (ha)	Rs. 20,000/ ha	50% of cost limited to Rs.10000/ha for a maximum area of 4 ha. per beneficiary, spread over a period of 3 years involving an assistance of Rs.4000/- in first year and Rs.3000/- each in second & third year. The programme to be linked with certification.	3400	136.00	81.60	54.40	
2nd Year	Rs. 20,000/ ha	50% of cost limited to Rs.10000/ha for a maximum area of 4 ha. per beneficiary, spread over a period of 3 years involving an assistance of Rs.4000/- in first year and Rs.3000/- each in second & third year. The programme to be linked with certification.	4000	120.00	72.00	48.00	
3rd Year	Rs. 20,000/ ha	50% of cost limited to Rs.10000/ha for a maximum area of 4 ha. per beneficiary, spread over a period of 3 years involving an assistance of Rs.4000/- in first year and Rs.3000/- each in second & third year. The programme to be linked with certification.	4000	120.00	72.00	48.00	
(ii) Organic Certification (no)							
1st Year (ha)	Project based	Rs. 5 lakh for a cluster of 50 ha which will include Rs.1.50 lakh in first year, Rs. 1.50 lakh in second year and Rs. 2.00 lakh in third year.	68	102.00	61.20	40.80	
2nd Year	Project based	Rs. 5 lakh for a cluster of 50 ha which will include Rs.1.50 lakh in first year, Rs. 1.50 lakh in second year and Rs. 2.00 lakh in third year.	80	120.00	72.00	48.00	

Rs 6910

3rd Year	Project based	Rs. 5 lakh for a cluster of 50 ha which will include Rs. 1.50 lakh in first year, Rs. 1.50 lakh in second year and Rs. 2.00 lakh in third year.	80	160.00	96.00	64.00				
Sub-total			11628.00	758.00	454.80	303.20				
8	Pollination support through beekeeping									
Honey bee colony	Rs.2000/colony of 8 frames	40% of cost limited to 50 colonies / beneficiary.	2000	16.00	9.60	6.40				
Hives	Rs.2000/ per hive.	40% of cost limited to 50 colonies / beneficiary.	2000	16.00	9.60	6.40				
Equipment including honey extractor (4 frame), food grade container (30 kg), net etc.	Rs. 20,000/set	40% of the cost limited to one set per beneficiary.	1200	96.00	57.60	38.40				
Sub-total			5200.00	128.00	76.80	51.20				
9	Horticulture Mechanization									
Power sprayer/power operated Talwan sprayer (16 lts Capacity)	Knapsack operated Talwan sprayer (16 lts Capacity)									
a) General	0.20 lakh per unit	Subject to a maximum of Rs.0.08 lakh/unit for general category farmers, and in the case if SC, ST, Small & Marginal farmers, women farmers and beneficiaries in NE states, subject of a maximum of Rs. 0.10 lakh/unit.	1000	80.00	48.00	32.00				
b) SC/ST etc	0.20 lakh per unit	Subject to a maximum of Rs.0.08 lakh/unit for general category farmers, and in the case if SC, ST, Small & Marginal farmers, women farmers and beneficiaries in NE states, subject of a maximum of Rs. 0.10 lakh/unit.			0.00	0.00				
Eco Friendly Light Trap	Rs. 0.028 lakh/unit	Subject to a maximum of Rs.0.012 lakh/unit for general category farmers, and in the case if SC, ST, Small & Marginal farmers, women farmers and beneficiaries in NE states, subject of a maximum of Rs. 0.014 lakh/unit.								
1) General	-do-	-do-	5000	60.00	36.00	24.00				
2) SF/MF	-do-	-do-			0.00	0.00				
3) SC & ST	-do-	-do-			0.00	0.00				
Sub-total			6000	140	84	56				
Technology Dissemination through demonstration/ Front Line Demonstration (FLD)	Rs. 25.00 lakh	75 % of cost in farmers' field and 100% of cost in farms belonging to Public Sector, SAUs etc. No change	1	25.00	15.00	10.00				
10	Human Resource Development (HRD)									
HRD for Supervisors & Entrepreneurs	Rs. 20.00 lakh / unit	100% of the cost in first year. In subsequent years, cost of infrastructure not to be claimed.			0.00	0.00				

Handwritten signature

10.7.20

HRD for Gardeners	Rs. 15.00 lakh / unit	100% of the cost.				0.00	0.00	
Training of farmers								
Within the State	Rs. 1000/day per farmer including transport	100% of the cost.	3120	31.20	18.72	12.48		
Outside the state	Project based as per actual.	100% of the cost.	500	35.00	21.00	14.00		project based
(e) Exposure visit of farmers								
Outside the State	Project based as per actual.	100% of the cost.	300	21.00	12.60	8.40		project based
Outside India	Rs. 4.00 lakh / participant	Project Based. 100% of air/rail travel cost.	5.00	20.00	12.00	8.00		
Training / study tour of technical staff/ field functionaries								
Within the State	Rs.300/day per participant plus TA/DA, as	100% of the cost.	28	0.08	0.05	0.03		
Outside India	Rs. 6.00 lakh / participant	100% of the cost on actual basis.			0.00	0.00		
Sub-total			3953.00	107.28	64.37	42.91		
11	INTEGRATED POST HARVEST MANAGEMENT							
Pack house / On farm collection & storage unit	Rs. 4.00 lakh/unit with size of 9MX6M	50% of the capital cost.	227	454.00	272.40	181.60		
Cold Storage (Construction, Expansion and Modernisation)								
j) Cold storage units Type 1 - basic mezzanine structure with large chamber (of >250 MT) type with								
a) General Area	Rs. 8,000/MT, (max 5,000 MT capacity)	Credit linked back-ended subsidy @ 35% of the cost of project in general areas and 50% of cost in case Hilly & Scheduled areas, per beneficiary.	6	840.00	504.00	336.00		
b) Hilly Area	Rs. 8,000/MT, (max 5,000 MT capacity)	Credit linked back-ended subsidy @ 35% of the cost of project in general areas and 50% of cost in case Hilly & Scheduled areas, per beneficiary.						
Refer vans/ containers (general areas)								
a) General Area	Rs. 26.00 lakh for 9 MT (NHM & HMNEH), and prorata basis for lesser capacity, but not below 4 MT.	Credit linked back-ended subsidy @ 35% of the cost of project in general areas and 50% of cost in case of Hilly & Scheduled areas, per beneficiary.		0.00	0.00	0.00		
b) Hilly Area	Rs. 26.00 lakh for 9 MT (NHM & HMNEH), and prorata basis for lesser capacity, but not below 4 MT.	Credit linked back-ended subsidy @ 35% of the cost of project in general areas and 50% of cost in case of Hilly & Scheduled areas, per beneficiary.			0.00	0.00		
Primary/ Mobile / Minimal processing unit								
Preservation unit (low cost)	Rs.2.00 lakh/unit for new unit and Rs. 1.00lakh/unit for up-gradation	50% of the total cost.	260	260.00	156.00	104.00		
New unit	Rs.2.00 lakh/unit for new unit				0.00	0.00		

ml

	Upgraded unit	Rs.1.00lakh/unit for up-gradation					0.00	0.00		
	Low cost onion storage structure (25 MT)	Rs. 1.75 lakh/per unit	50% of the total cost.				0.00	0.00		
	Pusa Zero energy cool chamber (100 kg)	Rs. 4000 per unit	50% of the total cost.				0.00	0.00		
	Integrated Cold Chain supply System						0.00	0.00		
	a) General Area	Project Based. Project should comprise of minimum two components listed under C.1 to C.13 above, with maximum cost of Rs. 600.00 lakh.	Credit linked back-ended subsidy @ 35% of the cost of project in general areas and 50% of cost in case Hilly & Scheduled areas, per beneficiary.				0.00	0.00		
	b) Hilly Area	Project Based. Project should comprise of minimum two components listed under C.1 to C.13 above, with maximum cost of Rs. 600.00 lakh.	Credit linked back-ended subsidy @ 35% of the cost of project in general areas and 50% of cost in case Hilly & Scheduled areas, per beneficiary.				0.00	0.00		
	Sub-total				493.00	1554.00	932.40	621.60		
12	ESTABLISHMENT OF MARKETING INFRASTRUCTURE FOR HORTICULTURAL									
	Retail Markets/ outlets (environmentally controlled)									
	a) General Area	Rs. 15.00 lakh /unit	Credit linked back-ended subsidy @ 35% of the capital cost of project in general areas and 50% in case of Hilly & Scheduled areas, per beneficiary.		2	10.50	6.30	4.20		
	b) Hilly Area	Rs. 15.00 lakh /unit	Credit linked back-ended subsidy @ 35% of the capital cost of project in general areas and 50% in case of Hilly & Scheduled areas, per beneficiary.				0.00	0.00		
	Static/Mobile Vending Card/ platform with cool chamber.	Rs. 30,000/ unit	50% of total cost.				0.00	0.00		
	Sub-total				2.00	10.50	6.30	4.20		
13	Mission Management									
	State & Districts Mission Offices and implementing agencies for administrative expenses, project, preparation, computerization, contingency etc.	5% of total annual expenditure on the basis of appraised needs to State Horticulture Mission (SHM) / implementing Agencies	100% assistance.			548.50	329.10	219.40	16.80	

20/09/10

Institutional Strengthening, hire/purchase of vehicles, hardware/software	Project based	100% assistance.			0.00	0.00	
Seminars, conferences, workshops, exhibitions, Kisan International level	Rs. 7.50 lakh per event.	100% of cost per event of 4 days, on pro rata basis.			0.00	0.00	
National level	Rs. 5.00 lakh per event.	100% of cost per event of two days.	1	5.00	3.00	2.00	
State level	Rs. 3.00 lakh /event	100% assistance subject to a maximum of Rs.3.00 lakh per event of two days.	1	3.00	1.80	1.20	
District level	Rs. 2.00 lakh /event	100% assistance subject to a maximum of Rs.2.00 lakh per event of two days.	6	12.00	7.20	4.80	
Information dissemination through publicity, printed literature etc and local advertisements	Rs. 0.40 lakh/ block	100% of cost.			0.00	0.00	
Development of technology packages in electronic form to be shared through IT network	Rs. 1.00 lakh/ district	100% of Cost			0.00	0.00	
Technical Support Group (TSG) at State Level for hiring experts/staff, studies, monitoring & concurrent evaluation/evaluation, mass media, publicity, video conference etc.	Project based, subject to a ceiling of Rs. 50. 00 lakh per annum/state	100% of cost			0.00	0.00	
Promotion of Farmer Producers Organization/ FPO/FIG Farmer Interest Groups of 15-20 farmers/20 ha, Growers Associations and tie up with Financial Institution and Aggregators.	As per norms issued by SFAC.	As per norms issued by SFAC from time to time.			0.00	0.00	
Baseline survey and Strengthening horticultural statistical data base	Rs. 100.00 lakh for large states, Rs. 50.00 lakh for small states and Rs. 25.00 lakh for very small states/ UTs.	100% of cost as one time grant on survey related activities.			0.00	0.00	
Sub-total			8.00	568.50	341.10	227.40	16.80
Grand Total			57229.92	11539.00	6923.40	4615.60	16.80

13.10.10